

DEPARTMENT OF THE ARMY TECHNICAL MANUAL

---

**DIRECT SUPPORT AND GENERAL SUPPORT  
MAINTENANCE REPAIR PARTS AND  
SPECIAL TOOLS LIST  
FOR  
CLEANER, STEAM, PRESSURE JET, WHEEL MOUNTED:  
KEROSENE OR LIGHT FUEL OIL FIRED,  
ELECTRIC MOTOR, 1-HP, 115-V, AC, 60-C, SGLE-PH  
(HOMESTEAD VALVE MANUFACTURING COMPANY  
MODEL RI-1600C)  
(4940-351-2927)**

THIS PUBLICATION IS A COURTESY QUICK COPY  
FROM THE UNITED STATES ARMY  
PUBLICATIONS DISTRIBUTION CENTER, ST.  
LOUIS, MISSOURI, TO MEET YOUR NEEDS  
WHILE WE REPLENISH OUR REGULAR STOCK.

---

**HEADQUARTERS, DEPARTMENT OF THE ARMY  
23 JUNE 1971**

**DIRECT SUPPORT AND GENERAL SUPPORT MAINTENANCE**

**REPAIR PARTS AND SPECIAL TOOLS LIST  
FOR  
CLEANER, STEAM, PRESSURE JET, WHEEL MOUNTED:  
KEROSENE OR LIGHT FUEL OIL FIRED,  
ELECTRIC MOTOR, 1-HP, 11S-V, AC, 60-C, SGLE-PH  
(HOMESTEAD VALVE MANUFACTURING COMPANY  
MODEL RI-1600C)  
(4940-351-2927)**

This manual is current to 12 May 1971

	Page
Section I. INTRODUCTION.....	2
Section II. REPAIR PARTS FOR DIRECT SUPPORT AND GENERAL SUPPORT MAINTENANCE	
Instrument panel and assembly group .....	8
Junction box assembly group.....	10
Power supply group.....	12
Burner assembly group .....	14
Fuel pump, filter, and motor assembly group.....	16
Blower assembly group .....	18
Fuel tank assembly group .....	20
Water tank assembly group .....	22
Pump assembly group.....	24
Water pump fittings group .....	26
Accumulator with fittings group .....	28
Heating coil and casing assembly group.....	30
Cleaning gun group .....	32
Wheel group .....	34
Section III. INDEX-FEDERAL STOCK NUMBER AND REFERENCE NUMBER CROSS-REFERENCE TO FIGURE AND ITEM NUMBER.....	35

LIST OF ILLUSTRATIONS			<i>Figure</i>	<i>Title</i>	<i>Page</i>
<i>Figure</i>	<i>Title</i>	<i>Page</i>			
1.	Steam cleaner-right front view.....	5	9.	Fuel tank assembly group-exploded view .....	19
2.	Steam cleaner-left rear view .....	6	10.	Water tank assembly group-exploded view .....	21
3.	Instrument panel assembly group .....	7	11.	Pump assembly group-exploded view .....	23
4.	Junction box assembly group .....	9	12.	Water pump fittings group-exploded view .....	25
5.	Power supply group-exploded view . .....	11	13.	Accumulator with fittings group-exploded view .....	27
6.	Burner assembly group-exploded view .....	13	14.	Heating coil and casing assembly group- exploded view.....	29
7.	Fuel pump, filter, and motor assembly group- exploded view.....	15	15.	Cleaning gun group-exploded view . .....	31
8.	Blower assembly group-exploded view .....	17	16.	Wheel group-exploded view .....	33

**Section I. INTRODUCTION**

**1. Scope**

This manual lists repair parts required for the performance of direct support and general support maintenance of the steam cleaner.

**2. General**

This Repair Parts List is divided into the following sections:

*a. Repair Part - Section II.* A list of repair parts authorized for the performance of maintenance at the direct support and general support level in figure and item number sequence.

*b. Special Tools, Test and Support Equipment.* Not applicable.

*c. Federal Stock Number and Reference Number Index-Section III.* A list of Federal stock numbers in ascending numerical sequence followed by a list of reference numbers in ascending alpha-numeric sequence, cross-referenced to the illustration figure number and item number.

**3. Explanation of Columns**

The following provides an explanation of columns in the tabular lists in Section II.

*a. Source, Maintenance, and Recoverability Codes (SMR), Column 1:*

(1) Source code indicates the selection status and source for the listed item. Source codes used are:

<i>Code</i>	<i>Explanation</i>
A	Applied to assemblies which are not procured or stocked as such but are made up of two or more units, each of which carry individual stock numbers and description and are procured and stocked and can be assembled by units at indicated maintenance categories.
G	Applied to major assemblies that are procured with PEMA funds for initial issue only to be used as exchange assemblies at DSU and GSU level. These assemblies will not be stocked above DSU and GSU level or returned to depot supply level.
M	Applied to repair parts which are not procured or stocked but are to be manufactured at indicated maintenance categories.
P	Applied to repair parts which are stocked in or supplied from GCSA/DIXA, or Army supply system and authorized for use at indicated maintenance categories.
P <sub>2</sub>	Repair parts which are procured and stocked for insurance purposes because the combat or military essentially of the end item dictates that a minimum quantity be available in the supply system.
X	Applied to parts and assemblies which are not procured or stocked; the mortality of which is normally below that of the applicable end item; and the failure of which should result in retirement of the end item from the supply system

<i>Code</i>	<i>Explanation</i>
X1	Applied to repair parts which are not procured or stocked, the requirement for which will be supplied by use of next higher assembly or component.
X2	Applied to repair parts which are not stocked. The indicated maintenance category requiring such repair parts will attempt to obtain through cannibalization; if not obtainable through cannibalization, such repair parts will be requisitioned with supporting justification through normal supply channels.

(2) code indicates the lowest category of maintenance authorized to install the listed item. Maintenance level codes are:

<i>Code</i>	<i>Explanation</i>
C	Operator/Crew maintenance
O	Organizational maintenance
F	Direct support maintenance
H	General support maintenance
D	Depot maintenance

(3) Recoverability code indicates whether unserviceable item should be returned for recovery or salvage. Items not coded are expendable. Recoverability codes are:

<i>Code</i>	<i>Explanation</i>
R	Applied to Repair parts (assemblies and components) which are considered economically repairable at direct and general support maintenance levels. When the maintenance capability to repair these items does not exist, they are normally disposed of at the GS level. When supply considerations dictate, some of these repair parts may be listed for automatic return to supply for depot level repair as set forth in AR 710-50. When so listed, they will be replaced by supply on an exchange basis.
S	Repair parts, special tools, test equipment and assemblies which are economically repairable at DSU and GSU activities and which normally are furnished by supply on an exchange basis. When items are determined by a GSU to be uneconomically repairable, they will be evacuated to a depot for evaluation and analysis before final disposition.
T	Applied to high dollar value recoverable repair parts which are subject to special handling and are issued on an exchange basis. Such repair parts are normally repaired or overhauled at depot maintenance activities.
U	Applied to repair parts specifically selected for salvage by reclamation units because of precious metal content, critical materials, high dollar value reusable casings or castings.

*b. Federal Stock Number, Column 2.* This column indicates the Federal Stock Number assigned to the item and will be used for requisitioning purposes.

*c. Description, Column 3.* This column indicates the Federal item name and any additional description required. A part number or other reference number is

followed by the applicable five-digit Federal supply code for manufacturers in parentheses.

d. *Unit of Measure (U/M), Column 4.* A two character alphabetic abbreviation indicating the amount or quantity of the item upon which the allowances are based, e.g., FT, EA., PR, etc.

e. *Quantity Incorporated in Unit, Column 5.* This column indicates the quantity of the item used in the assembly group. A "V" appearing in this column in lieu of a quantity indicates that a definite quantity cannot be indicated (e.g., shims, spacers, etc.).

f. *30-Day DS/GS Maintenance Allowance, Columns 6 and 7.*

**NOTE: Allowances in GS column are for -S maintenance only.**

(1) The allowance columns are divided into three subcolumns. Indicated in each subcolumn, opposite the first appearance of each item, is the total quantity of items authorized for the number of equipment's supported. Subsequent appearances of the same item will have the letters "REF" in the applicable allowance columns. Items authorized for use as required but not for initial stockage are identified with an asterisk in the allowance column.

(2) The quantitative allowances for DS/GS levels of maintenance will represent initial stockage for a 30-day period for the number of equipment's supported.

(3) Determination of the total quantity of parts required for maintenance of more than 100 of these equipment can be accomplished by converting the equipment quantity to a decimal factor by placing a decimal point before the next to last digit of the number to indicate hundredths, and multiplying the decimal factor by the parts quantity authorized in the 51-100 allowance column. Example, authorized allowance for 51-100 equipments is 40; for 150 equipments multiply 40 by 1.50 or 60 parts required.

g. *1-Year Allowance Per 100 Equipments/Contingency Planning Purposes, Column 8.* This column indicates opposite the first appearance of each item the total quantity required for distribution and contingency planning purposes. The range of items indicates total quantities of all authorized items required to provide for adequate support of 100 equipments for one year.

h. *Depot Maintenance Allowance Per 100 Equipments, Column 9.* This column indicates opposite the first appearance of each item, the total quantity authorized for depot maintenance of 100 equipments. Subsequent appearances of the same item will have the letters "REF" in the allowance column. Items authorized for use as required but not for initial stockage are identified with an asterisk in the allowance column.

i. *Illustration, Column 10.* This column is divided as follows:

(1) Figure number, column 10a. Indicates the figure number of the illustration in which item is shown.

(2) Item number, column 10b. Indicates the callout number used to reference the item in the illustration.

**4. Special Information**

The following publication pertains to the steam cleaner and its components: TM 9-4940-324-12 Operator's and Organizational Maintenance Manual.

**5. How to Locate Repair Parts**

a. When Federal stock number or reference number is unknown:

(1) *First.* Using the table of contents, determine the assembly group within which the repair part belongs. This is necessary since illustrations are prepared for assembly groups and listings are divided into the same groups.

(2) *Second.* Find the illustration covering the assembly group to which the repair part belongs.

(3) *Third.* Identify the repair part on the illustration and note the illustration figure and item number of the repair part.

(4) *Fourth.* Using the Repair Parts Listing, find the assembly group to which the repair part belongs and locate the figure and item number noted on the illustration.

b. When Federal stock number or reference is known:

(1) *First.* Using the Index of Federal Stock Numbers and Reference Numbers, find the pertinent Federal stock number or reference number. The index is in ascending FSN sequence followed by a list of reference numbers in ascending alpha-numeric sequence, cross-referenced to the illustration figure number and item number.

(2) *Second.* Using the Repair Parts Listing, find the assembly group of the repair part and the illustration figure number and item number referenced in the Index of Federal Stock Numbers and Reference Numbers.

**6. Abbreviations**

Abbreviations	Explanation
adj	adjust(able) (ing)
amp	ampere(s)
assy	assembly(ies)
AWG	American Wire Gage
br	bra
c	cycle(s)
c to c	center to center
cd- or zn-plated	cadmium- or zinc-plated
cond	conductor
cop	copper
cyl	cylinder(s)
dia	diameter
h	high, height
id	inside diameter
lacqd	lacquered
lg	long

NPT ..... American Standard Taper Pipe Thread  
od ..... outside diameter  
patt ..... pattern  
ph ..... phase  
psi ..... pounds per square Inch  
reg ..... regular  
ru ..... rubber  
S ..... steel  
spec ..... specification  
std ..... standard  
sw ..... switch  
syn ..... synthetic  
thd ..... thread  
thk ..... thick  
tnd-cop ..... tinned-copper  
tu ..... tube  
UNC ..... Unified Coarse Thread  
UNF ..... Unified Fine Thread  
v ..... volt(s)  
w ..... watts)  
w/ ..... with

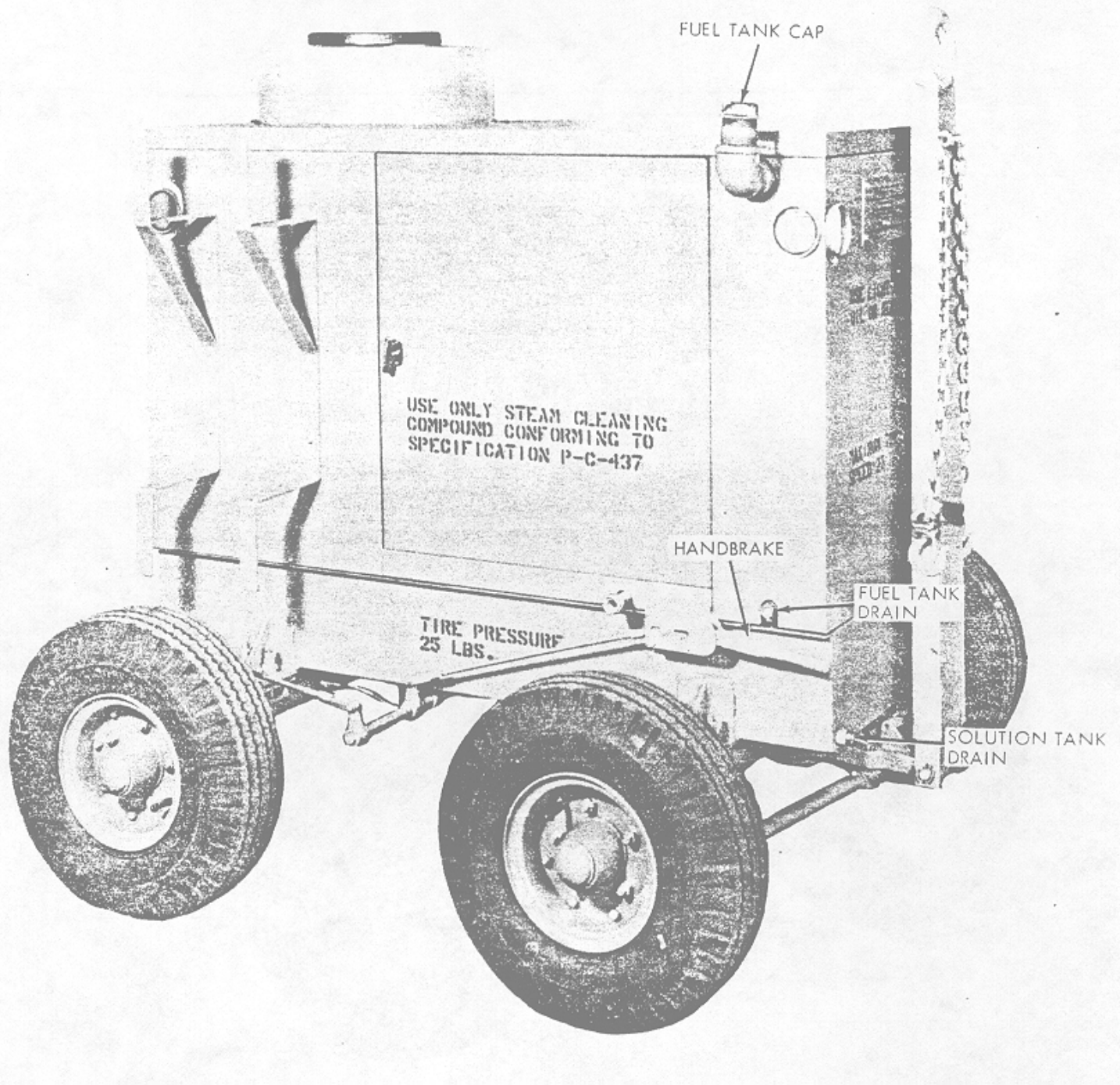
29215 Homestead Valve Manufacturing Co.  
Coraopolis, Pennsylvania 15108  
65083 Westinghouse Electric Corp.  
Lamp Division  
Bloomfield, New Jersey 07003  
81348 Federal Specifications  
81349 Military Specifications  
84147 Andrew Corporation  
Orland Park, Illinois 60462  
96906 Military Standards  
99166 Sundstrand Hydraulics  
Division of Sundrand Corp.  
Rockford, Illinois 61101

**7. Federal Supply Codes for Manufacturers**

<i>Code</i>	<i>Manufacturer</i>
24617	General Motors Corp. Detroit, Michigan 48202

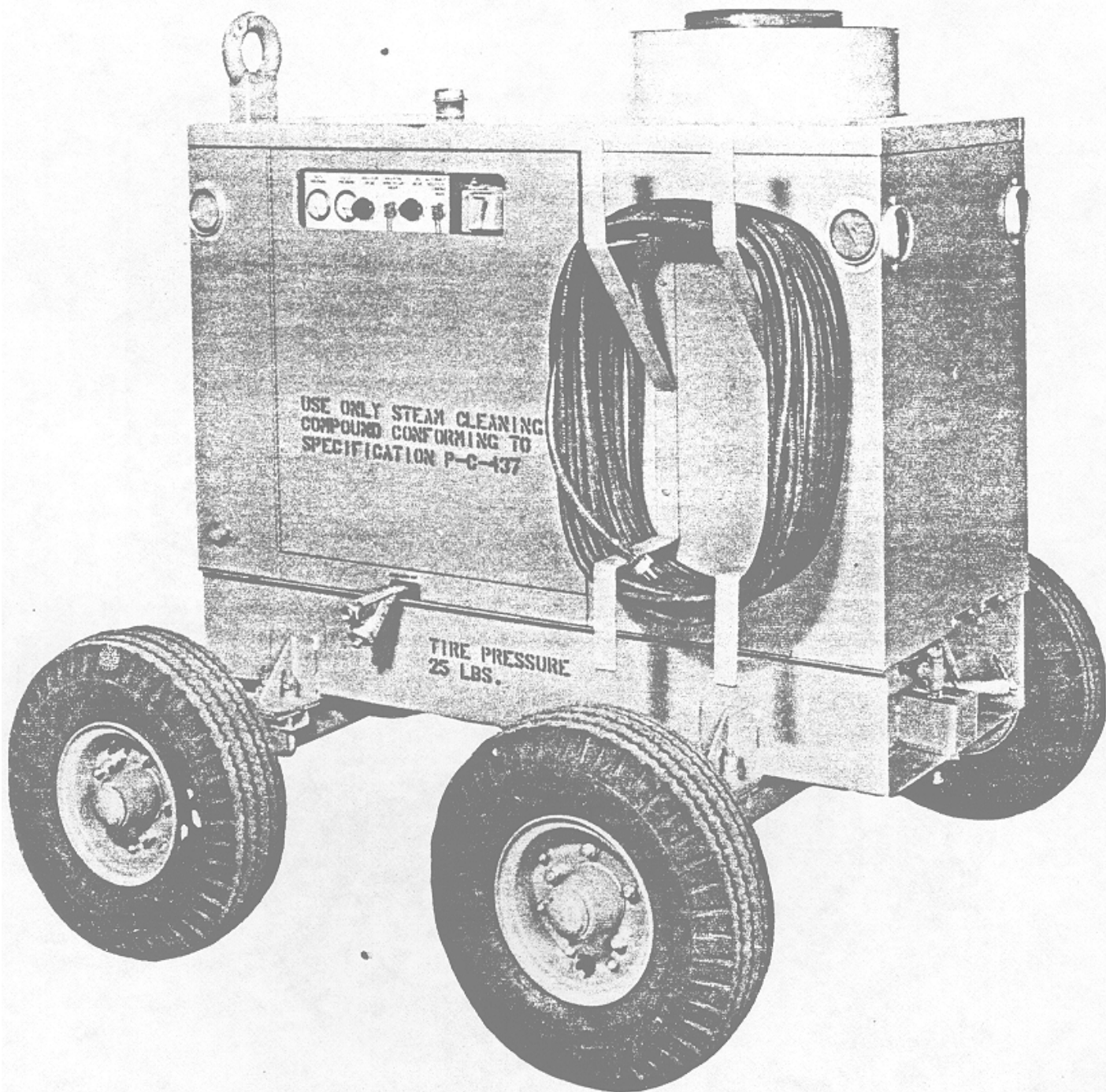
**8. Reporting of Equipment Publications Improvements**

The reporting of errors, omissions, and recommendations for improving this publication by the individual user is encouraged. Reports should be submitted on DA Form 2028 (Recommended Changes to DA Publications). Forward completed forms direct to: Commanding General, Headquarters, U. S. Army Weapons Command, ATTN: AMSWE-MAP, Rock Island, IL 61201.



WE 38283

Figure 1. Steam cleaner - right front view



WE 38284

Figure 2. Steam cleaner - left rear view.

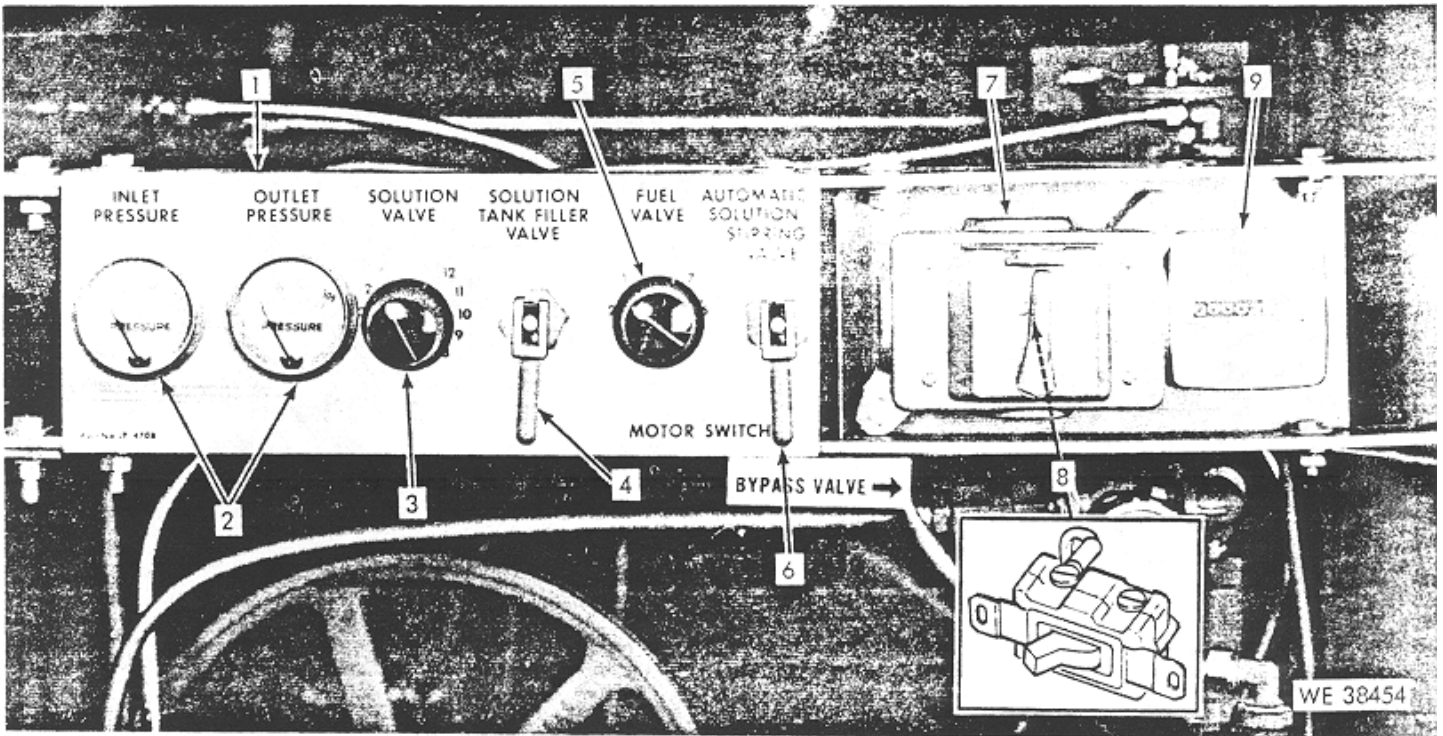
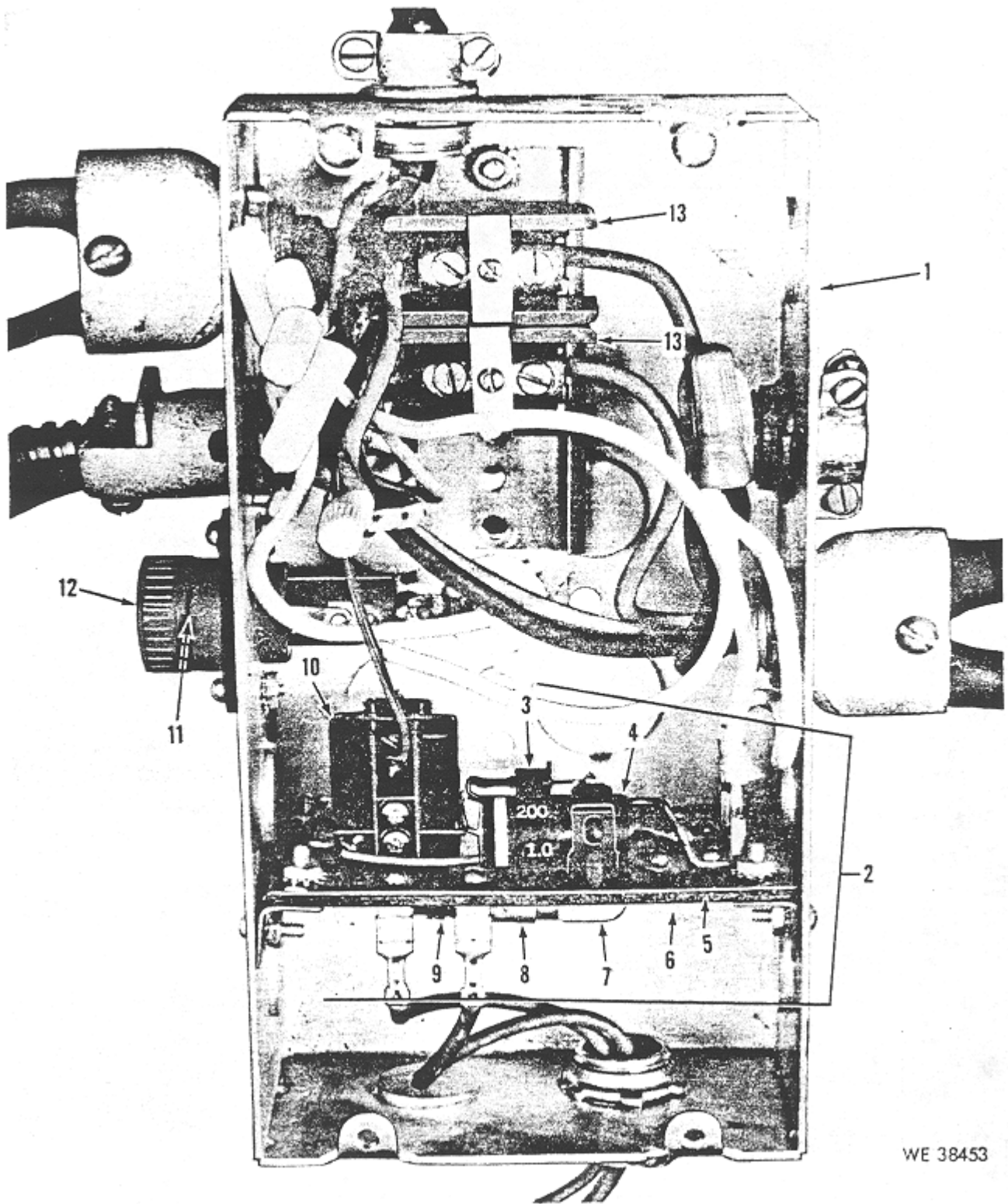


Figure 3. Instrument panel assembly group.



**SECTION II. REPAIR PARTS FOR DIRECT SUPPORT AND GENERAL SUPPORT  
DIRECT SUPPORT, GENERAL SUPPORT and DEPOT MAINTENANCE REPAIR PARTS LIST**

Act on Code	(1) Source Maint and Recov Code			(2) Federal Stock No.	(3) Description  <i>Reference Number</i>  <i>&amp; Mfr Code Usable on Code</i>	(4) Unit of Meas	(5) Qty Inc in Unit	(6) 30-Day DS Maint Allowance			(7) 30-Day GS Maint Allowance			(8) 1-Yr Alw Per 100 Equip Cntgcy	(9) Depot Maint Alw Per 100 Equip	(10) Illustration	
	(a) Source	(b) Maint	(c) Recov					(a)	(b)	(c)	(a)	(b)	(c)			(a) Fig. No.	(b) Item No.
								1 20	21 50	51 100	1 20	21 50	51 100				
	P	F	.....	4940-442-2270	INSTRUMENT PANEL ASSEMBLY GROUP PANEL, INSTRUMENT, BARE:: JP 4708 (29215)	EA	1	*	1	1	*	1	1	12	*	3	1
	P	F	.....	4940-136-2255	GAGE, PRESSURE, STEAM CLEANER water, 0-300 pci JP 2033 (29215)	EA	2	1	1	2	1	1	2	24	*	3	2
	P	F	.....	4940-625-2613	VALVE, SOLUTION REGULATOR: JP 772 (29215)	EA	1	*	1	1	*	1	1	12	*	3	3
	P	F	.....	4940 136-2252	VALVE ASSEMBLY, STEAM CLEANER solution tank filler. JP - 3142 (29215)	EA	1	*	1	1	*	1	1	12	*	3	4
	P	F	.....	4530-162-2612	VALVE, FUEL, OIL011, REGULATOR: JP-771 (29215)	EA	1	*	1	1	*	1	1	12	*	3	5
	P	F.	.....	4940-136-2265	VALVE ASSEMBLY, STEAM CLEANER automatic solution stirring .JP 3140 (29215)	EA	1	*	1	1	*	1	1	12	*	3	6
	P	F	.....	5975-134 5714	CASE SWITCH BOX: JP 4731-2 (29215)	EA	1	*	1	1	*	1	1	12	*	3	7
	P	F	.....	5930- 443-5133	SWITCH MOTOR: dbl pole JP 3591-1 (29215)	EA	1	1	1	2	1	1	2	24	*	3	8
	P	F	.....	4940-136 2258	METER, HOUR, STEAM CLEANER: JD 2402 (29215)*	EA	1	*	1	1	*	1	2	12	*	3	9

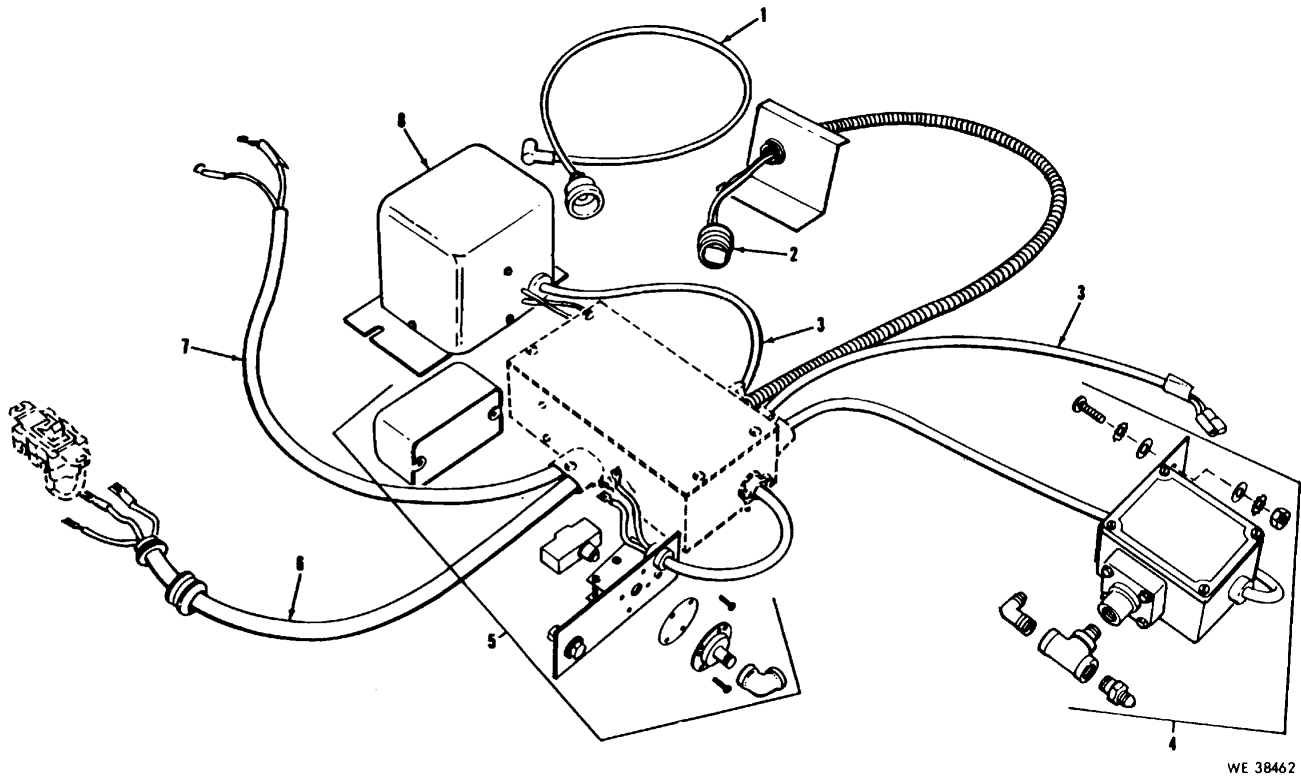


WE 38453

Figure 4. Junction box assembly group.

**SECTION II. REPAIR PARTS FOR DIRECT SUPPORT AND GENERAL SUPPORT**  
**-Continued**  
**DIRECT SUPPORT. GENERAL SUPPORT and DEPOT MAINTENANCE REPAIR PARTS LIST**

Act on Code	(1) Source Maint and Recov Code			(2) Federal Stock No.	(3) Description  <i>Reference Number &amp; Mfr Code</i>  <i>Usable on Code</i>	(4) Unit of Meas	(5) Qty Inc in Unit	(6) 30-Day DS Maint Allowance			(7) 30-Day GS Maint Allowance			(8) 1-Yr Alw Per 100 Equip Cntgcy	(9) Depot Maint Alw Per 100 Equip	(10) Illustration	
	(a) Source	(b) Maint	(c) Recov					(a) 1-20	(b) 21-50	(c) 51-100	(a) 1-20	(b) 21-50	(c) 51-100			(a) Fig. No.	(b) Item No.
	P	H	R	4940-136-2254	JUNCTION BOX ASSEMBLY GROUP	EA	1	*	1	1	*	1	1	12		4	1
	P	F		4940-422-2249	JUNCTION BOX ASSEMBLY; JD-2405-A-(29215) IGNITION, FAILURE, ASSEMBLY: JD-4733-(29215)	EA	1	1	1	2	1	1	2	14		4	2
	P	F		4940-442-2256	RECTIFIER: JD-2408 (29215)	EA	1	1	1	2	1	1	2	24		4	3
	P	F		4940-442-2255	CAPACITOR: JD-2413 (29215)	EA	1	1	1	2	1	1	2	24		4	4
	P	F		4940-442-2251	BOARD MOUNTING: ignition failure assy JP-4733-1 (29215)	EA	1	*	1	1	*		1	12		4	5
	P	F		4940-442-2258	PHOTO, CELL: JD-2411 (29215)	EA	1	*	1	1	*	1	1	12		4	6
	P	F		6240-682-3411	LAMP. GLOW: neon NE-51H (65083)	EA	1	1	2	3	1	2	3	36		4	7
	P	F		4940-442-2234	HOLDER, LAMP: JP-4714 (29215)	EA	1	*	1	1	1	1	1	12		4	8
	P	F		4940-442-2257	RESISTOR: ½ W, 33,000 OHMS JD-2410 (29215)	EA	1	1	1	2	1	1	2	24		4	9
	P	F		4940-442-2252	RELAY: 110v JD-2409 (29215)	EA	1	1	1	2	1	1	2	24		4	10
	P	F		5920-247-0174	FUSE, ELECTRICAL: 125v, 25 amp JD-2404 929215)	EA	1	2	3	5	2	3	5	60		4	11
	P	F		4940-442-2235	HOLDER, FUSE: JD-2558 (29215)	EA	1	*	1	1	*	1	1	12		4	12
	P	F		4940-443-5123	TERMINAL, BLOCK: JD-2111-1 (29215)	EA	2	*	1	1	*	1	1	12		4	13



WE 38462

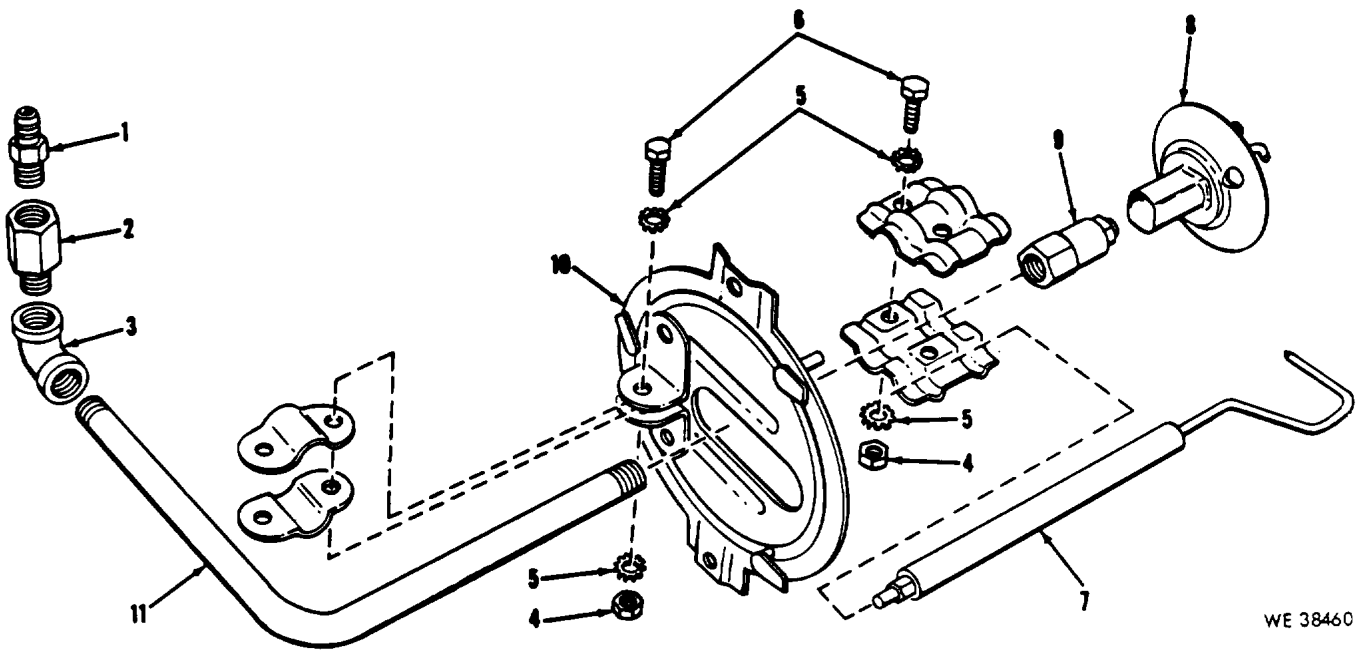
Figure 5. Power supply group-exploded view

**SECTION II. REPAIR PARTS FOR DIRECT SUPPORT AND GENERAL SUPPORT**

-Continued

**DIRECT SUPPORT, GENERAL SUPPORT and DEPOT MAINTENANCE REPAIR PARTS LIST**

Act on Code	(1) Source Maint and Recov Code			(2) Federal Stock No.	(3) Description  <i>Reference Number &amp; Mfr Code</i>  <i>Usable on Code</i>	(4) Unit of Meas	(5) Qty Inc in Unit	(6) 30-Day DS Maint Allowance			(7) 30-Day GS Maint Allowance			(8) 1-Yr Alw Per 100 Equip Cntgcy	(9) Depot Maint Alw Per 100 Equip	(10) Illustration	
	(a) Source	(b) Maint	(c) Recov					(a) 1-20	(b) 21-50	(c) 51-100	(a) 1-20	(b) 21-50	(c) 51-100			(a) Fig. No.	(b) Item No.
P	F	.....	4940-435-4677	THERMO-DISK, THERMOSTAT; JD-2403 (29215)	EA	1	*	1	1	*	1	1	12		5	2	
P	F	.....	6145-061-2075	CABLE, POWER, ELECTRICAL: tnd-cop. cond, 18 AWG, 2 cond, 300 v, type SJ,, ru insulation, syn-ru jacket, low tension J-C-580 (81348) For replacement of the following cables Junction box to transformer (25 in. lg) Junction box to solenoid (25 in. lg)	FT	5	*	1	1	*	1	1	12		5	3	
P	F	.....	4940-191-9191	SWITCH ASSEMBLY, STEAM CLEANER; low pressure w/ fittings JP-4720 A (29215)	EA	1	*	1	1	*	1	1	12		5	4	
P	F	.....	5930-411-5232	SWITCH PRESSURE: high pressure, steam cleaner JP-4743 (29215)	EA	1	*	1	1	*	1	1	12		5	5	
P	F	.....	6145-248-2616	CABLE POWER, ELECTRICAL: tnd-cop cond, 14 AWG, 3 cond, 600v, type TRI-4, ru insulation, laqd jacket, low tension. For replacement of the following cable: Main sw to junction box (27 in. lg)	FT	3	*	1	1	*	1	1	12		5	6	
P	F	.....	6145-726-8333	CABLE, POWER, ELECTRICAL: cop tnd-fin., 14AWG, 2 cond, 600 v, type SO, ru insulation, laqd jacket, low tension JC-30 (81348) For replacement of the following cable: Motor to junction box (36 in. lg)	FT	3	*	1	1	8	1	1	12		5	7	
P	F	.....	5950-255-3370	TRANSFORMER, POWER, SET-UP: JD-2557(29215)	EA	1	1	1	2	1	1	2	24		5	8	



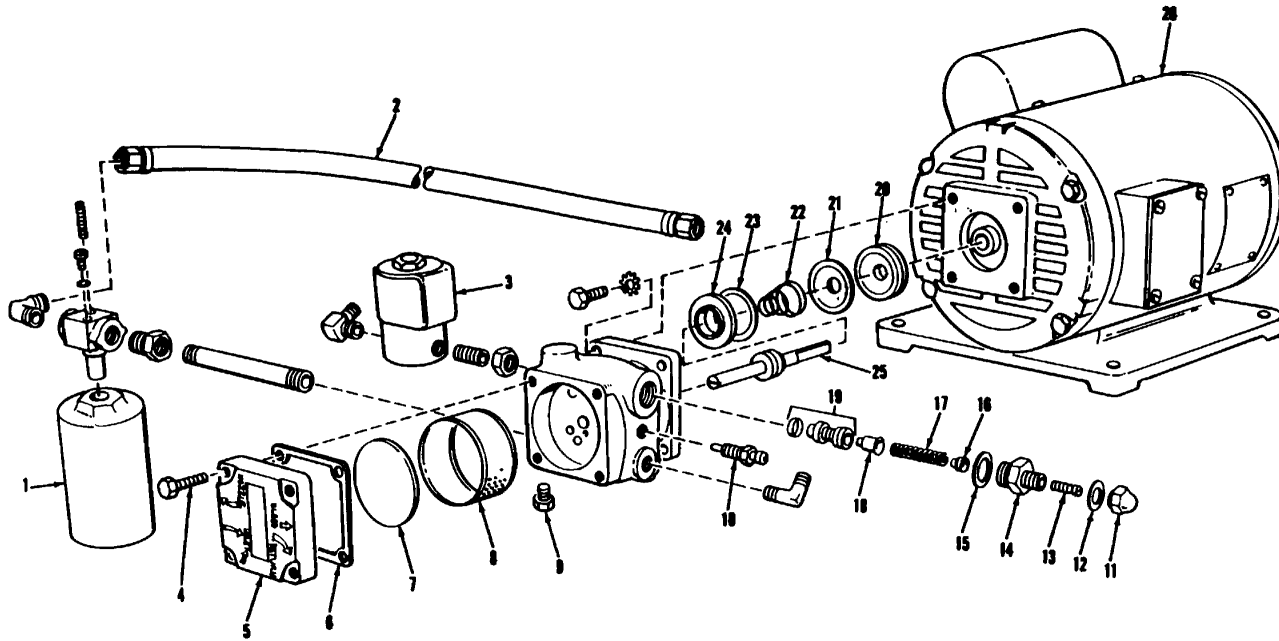
WE 38460

WE 38460

Figure 6. Burner assembly group-exploded view

**SECTION II. REPAIR PARTS FOR DIRECT SUPPORT AND GENERAL SUPPORT**  
**-Continued**  
**DIRECT SUPPORT, GENERAL SUPPORT and DEPOT MAINTENANCE REPAIR LIST**

Act on Code	(1) Source Maint and Recov Code			(2) Federal Stock No.	(3) Description  <i>Reference Number</i> <i>&amp; Mfr Code</i> <i>Usable on Code</i>	(4) Unit of Meas	(5) Qty Inc in Unit	(6) 30-Day DS Maint Allowance			(7) 30-Day GS Maint Allowance			(8) 1-Yr Alw Per 100 Equip Cntgty	(9) Depot Maint Alw Per 100 Equip	(10) Illustration	
	(a)	(b)	(c)					(a)	(b)	(c)	(a)	(b)	(c)			(a)	(b)
	Source	Maint	Recov					1-20	21-50	51-100	1-20	21-50	51-100			Fig. No.	Item No.
P	P	R	4940-136-2264	BURNER ASSEMBLY GROUP BURNER ASSEMBLY, STEAM CLEANER; JP-4725 (29215)	EA	1	1	1	2	1	1	2	24		6		
P	F	.....	4730-723-5549	ADAPTER, STRAIGHT, PIPE TO TUBE: br, 7/16-UNF/male a 1-4-NPT/male JD-659 (29215)	EA	1	1	2	2	1	2	2	24		6	1	
P	F	.....	4940-371-6576	VALVE RELIEF: anti-syphon JP-2028-1 (29215)	EA	1	1	2	2	1	2	2	24		6	2	
P	F	.....	4730-253-4426	ELBOW, PIPE: S, cd or zn-pltd, 90 deg, 1/4-18NPT/ female MIL-P-18174 (81349)	EA	1	1	2	2	1	2	2	24		6	3	
P	F	.....	5310-905-0762	NUT, PLAIN, HEXAGON: S, cd or zn-pltd, 1/4-20UNC MS51967-2 (96906)	EA	4	1	2	4	1	2	4	48		6	4	
P	F	.....	5310-209-0786	NUT, PLAIN: external, 8, cd or zn-pltd, 1/4 IN. ID M835335-33 (96906)	EA	8	1	2	4	1	2	4	48		6	5	
P	F	.....	5305-068-0502	SCREW, CAP, HEXAGON HEAD: S, cd or zn-pltd, 1/4 - 20UNC, 1/4 in. lg MS90725-6 (96906)	EA	4	1	2	4	1	2	4	48		6	6	
P	F	.....	4940-127-2971	ELECTRODE, STEAM CLEANER: S, porcelain insulation JL-145-16 (29215)	EA	1	1	2	4	1	2	4	48		6	7	
P	F	.....	4940-435-4673	AIR DEFLECTOR ASSEMBLY: JD-302-F (29215)	EA	1	1	2	2	1	2	2	24		6	8	
P	F	.....	4940-435-7723	BURNER, JET BODY; JD-265-A (29215)	EA	1	1	2	2	1	2	2	24		6	9	
X2	F	.....		PLATE, BURNER: JP-4718 (29215)	EA	1										10	
P	F	.....	4940-435-4681	NIPPLE, PIPE: S, 90°, 1/4 X 12 in. JD-1359-2-(29215)	EA	1	1	1	1		1	1	12		6	11	



WE 38463

Figure 7. Fuel pump, filter, and motor assembly- exploded view.

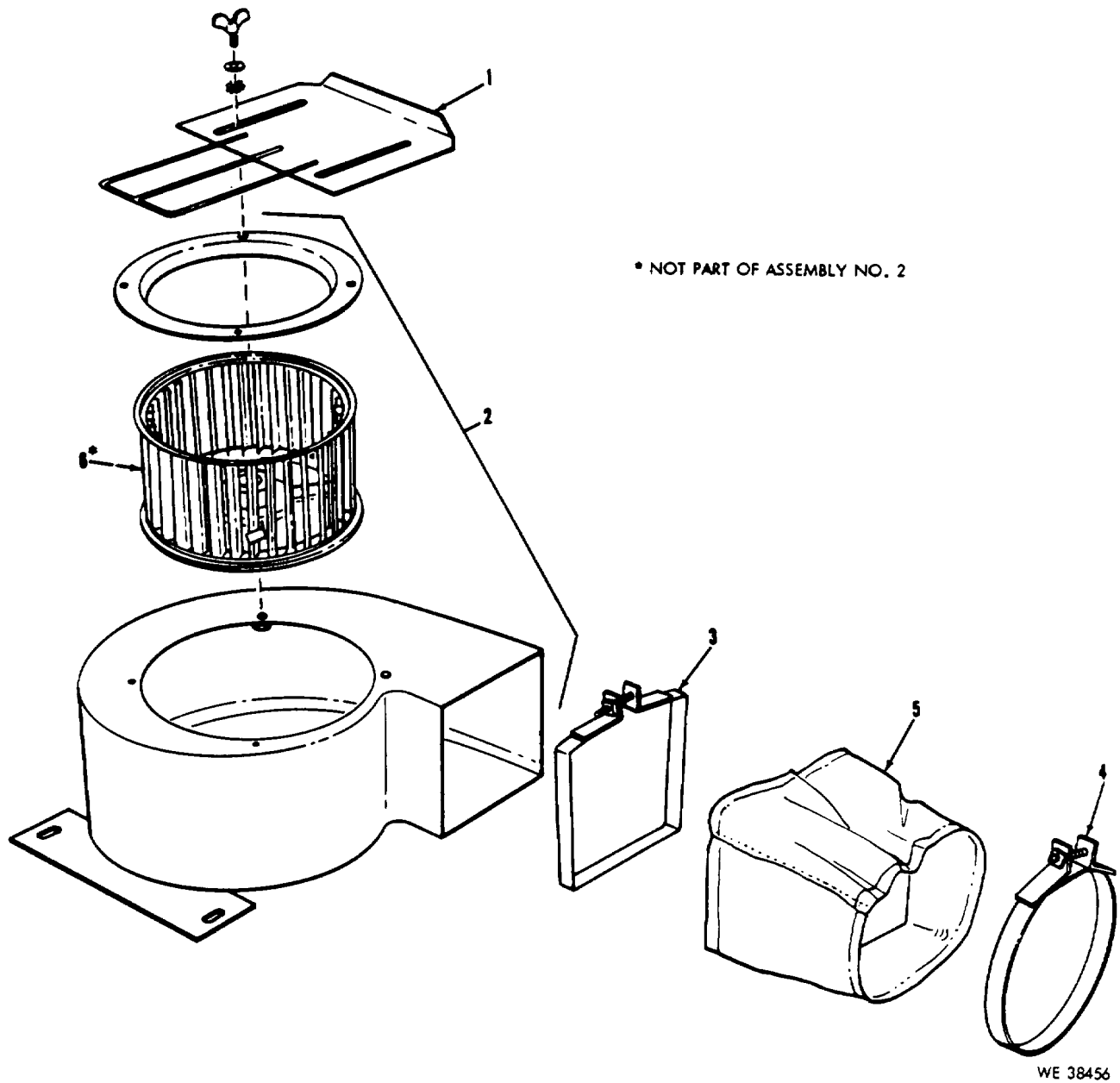


**SECTION II. REPAIR PARTS FOR DIRECT SUPPORT AND GENERAL SUPPORT**

**Continued**

**DIRECT SUPPORT, GENERAL SUPPORT and DEPOT MAINTENANCE REPAIR PARTS LIST**

Act on Code	(1) Source Maint and Recov Code			(2) Federal Stock No.	(3) Description  <i>Reference Number &amp; Mfr Code Usable on Code</i>	(4) Unit of Meas	(5) Qty Inc in Unit	(6) 30-Day DS Maint Allowance			(7) 30-Day GS Maint Allowance			(8) 1-Yr Alw Per 100 Equip Cntgcy	(9) Depot Maint Alw Per 100 Equip	(10) Illustration	
	(a) Source	(b) Maint	(c) Recov					(a) 1-20	(b) 21-50	(c) 51-100	(a) 1-20	(b) 21-50	(c) 51-100			(a) Fig. No.	(b) Item No.
P	F	.....	4940-442-2247	PUMP, FUEL: JD-2117-1 (29215)	EA	1	*	1	1	*	1	1	12	*	7	1	
P	F	.....	4940-443-5130	CARTRIDGE, FUEL FILTER: JD-2117-1 (29215)	ea	1	*	1	1	*	1	1	12	*	7	2	
P	F	.....	4940-443-5130	HOSE, FUEL: ru, 3/8 in. od, 27 in. lg. w/clamps, spuds and nuts JP-4728-A (29215)	ea	1	*	1	1	*	1	1	12	*	7	2	
p	f	.....	4940-127-2969	SOLENOID, VALVE: JD-2555 (29215)	EA	1	*	1	1	*	1	1	12	*	7	3	
X2	F	.....		SCREW, CAP, HEXAGON HEAD: 51361 (99166)	EA	1									7	4	
P	F	.....	4940-186-5962	COVER, BODY: 160079 (99166)	EA	1									7	5	
X2	F	.....		GASKET: cover 1600 (99166)	EA	1									7	6	
X2	F	.....		GASKET: 160061 (99166)	EA	1									7	7	
P	F	.....	4820-430-2193	STRAINER, VALVE: 160018 (99166)	EA	1	*	1	1	*	1	1	12	*	7	8	
P	F	.....	4730-018-9566	PLUG, PIPE: S, 1/8 IN. npt thd size F1251 (24617)	EA	1	*	1	1	*	1	1	12	*	7	9	
P	F	.....	4820-487-2389	VALVE, BLEEDER: 131222 (99166)	EA	1	*	1	1	*	1	1	12	*	7	10	
X2	F	.....		NUT, PLAIN, CAP: 160032 (99166)	EA	1									7	11	
P	F	.....	5350-429-3945	GASKET: end cap nut 160024 (33166)	EA	1	*	1	1	*	1	1	12	*	7	12	
X2	F	.....		SCREW PRESSURE ADJUSTING: 160041 (99166)*	EA	1									7	13	
P	F	.....	4940-186-5633	PLUG, ADJUSTING: 160027 (99166)	EA	1	*	1	1	*	1	1	12	*	7	14	
X2	F	.....		GASKET: 160023 (99166)	EA	1									7	15	
X2	F	.....		SEAT, HELICAL COMPRESSION SPRING: 160031 (99166)	EA	1									7	16	
X2	F	.....		SPRING, HELICAL COMPRESSION 160132 (99166)	EA	1	*	1	1	*	1	1	12	*	7	17	
P	F	.....	4940-186-5092	VALVE, SEAT: 160067 (99166)	EA	1									7	18	
P	F	.....	4940-186-5636	PISTON ASSEMBLY: w/lift band 160140 (99166)	ea	1	*	1	1	*	1	1	12	*	7	19	
P	F	.....	3895-374-6103	CUP, SHAFT BEARING SEAL: 100291 (99166)	EA	1	*	1	1	*	1	1	12	*	7	20	
X2	F	.....		SPRING, FLAT: 160011 (66166)	EA	1	*	1	1	*	1	1	12	*	7	21	
P	F	.....	5340-472-6194	SHIM: S, nonspec 1 1/16 in dia, 1 5/16 in. od, .010 thk 10181 (99166)	EA	1											
P	F	.....	4940-186-5651	SEAL ASSEMBLY: 395228 (99166)	EA	1	*	1	1	*	1	1	12	*	7	22	
P	F	.....	4940-186-5960	SHAFT, DRIVE ASSEMBLY: 160092 (99166)	EA	1	*	1	1	*	1	1	12	*	7	23	
P	H	.....	4940-454-8673	MOTOR, ELECTRIC: 1 H. P. JD-2559 (29215)	EA	1	*	1	1	*	1	1	12	*	7	24	



WE 38456

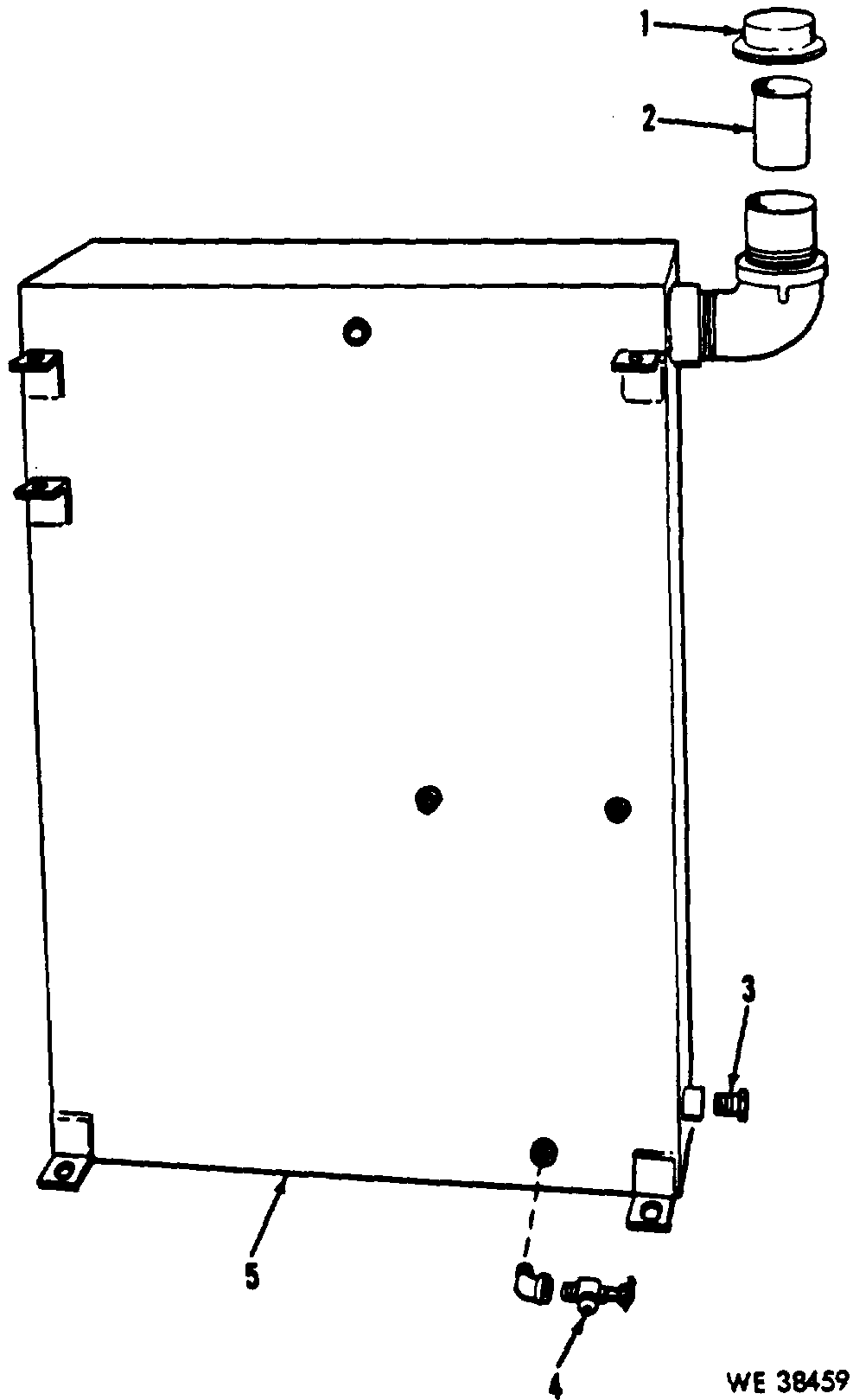
Figure 8. Blower assembly group - exploded view

**SECTION II. REPAIR PARTS FOR DIRECT SUPPORT AND GENERAL SUPPORT**

**Continued**

**DIRECT SUPPORT, GENERAL SUPPORT and DEPOT MAINTENANCE REPAIR PARTS LIST**

Act on Code	(1) Source Maint and Recov Code			(2) Federal Stock No.	(3) Description  <i>Reference Number &amp; Mfr Code</i> <i>Usable on Code</i>	(4) Unit of Meas	(5) Qty Inc in Unit	(6) 30-Day DS Maint Allowance			(7) 30-Day GS Maint Allowance			(8) 1-Yr Alw Per 100 Equip Cntgcy	(9) Depot Maint Alw Per 100 Equip	(10) Illustration	
	(a) Source	(b) Maint	(c) Recov					(a) 1-20	(b) 21-50	(c) 51-100	(a) 1-20	(b) 21-50	(c) 51-100			(a) Fig. No.	(b) Item No.
P	F		4940-442-2266	BLOWER ASSEMBLY GROUP	EA	1	*	1	1	*	1	1	12	*	8	1	
P	F		4940-442-2268	BAFFLE, AIR: JP-4333 (29215) HOUSE ASSEMBLY, BLOWER: JP-4319 (29215)	EA	1	*	1	1	*	1	1	12	*	8	2	
P	F		4940-442-2238	CLAMP, SLEEVE, BLOWER, TOP: JP-2186-B (29215)	EA	1	*	1	1	*	1	1	12	*	8	3	
P	F		4940-442-2236	CLAMP, SLEEVE, BLOWER, BOTTOM JP-2186-A (29215)	EA	1	*	1	1	*	1	1	12	*	8	4	
P	F		4940-442-2271	SLEEVE, DUCT, AIR: cloth JD-2187 (29215)	EA	1	*	1	1	8	1	1	12	*	8	5	
P	F		4940-400-2540	FAN, BLOWER: louver type JP -3187 (29215)	EA	1	*	1	1	*	1	1	12	*	8	6	



WE 38459

Figure 9. Fuel tank assembly group - exploded view

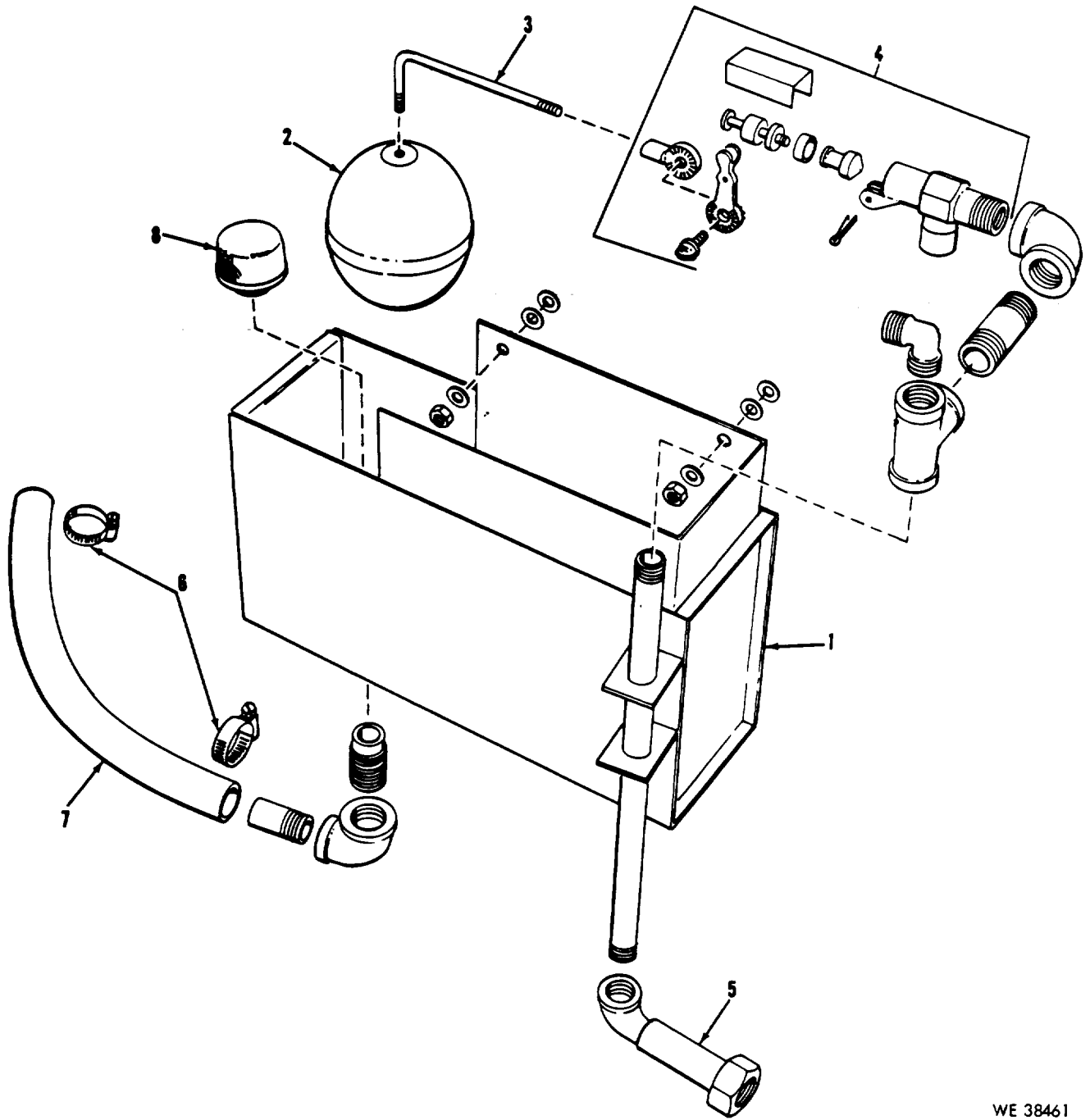
**SECTION II. REPAIR PARTS FOR DIRECT SUPPORT AND GENERAL SUPPORT**

**Continued**

**DIRECT SUPPORT. GENERAL SUPPORT and DEPOT MAINTENANCE**

**REPAIR PARTS LIST**

Act on Code	(1) Source Maint and Recov Code			(2) Federal Stock No.	(3) Description  <i>Reference Number &amp; Mfr Code</i> <i>Usable on Code</i>	(4) Unit of Meas	(5) Qty Inc in Unit	(6) 30-Day DS Maint Allowance			(7) 30-Day GS Maint Allowance			(8) 1-Yr Alw Per 100 Equip Cntgcy	(9) Depot Maint Alw Per 100 Equip	(10) Illustration	
	(a) Source	(b) Maint	(c) Recov					(a) 1-20	(b) 21-50	(c) 51-100	(a) 1-20	(b) 21-50	(c) 51-100			(a) Fig. No.	(b) Item No.
	P	H	R	4940-136-2253	FUEL TANK ASSEMBLY GROUP FUEL TANK ASSEMBLY, STEAM CLEANER: JP-4709 (29215)	EA	1	*	1	1	*	1	1	12	*	9	
X2	F				CAP, FUEL TANK: JP-677 (29215)	EA										9	1
P	F			4940-435-4682	SCREEN, FILLER, TANK FUEL: JD-2514 (29215)	EA	1	1	1	2	1	1	2	24	*	9	2
P	F			4940-435-7720	PLUG, PIPE: drain, 1/2-NPT JD-760 (29215)	EA	1	*	1	1	*	1	1	12	*	9	3
P	H			4940-435-7720	VALVE, SHUT OFF, FUEL: JE-193 (29215)	EA	1									9	4
X1					TANK, FUEL: JP-4709-A (29215)	EA	1									9	5

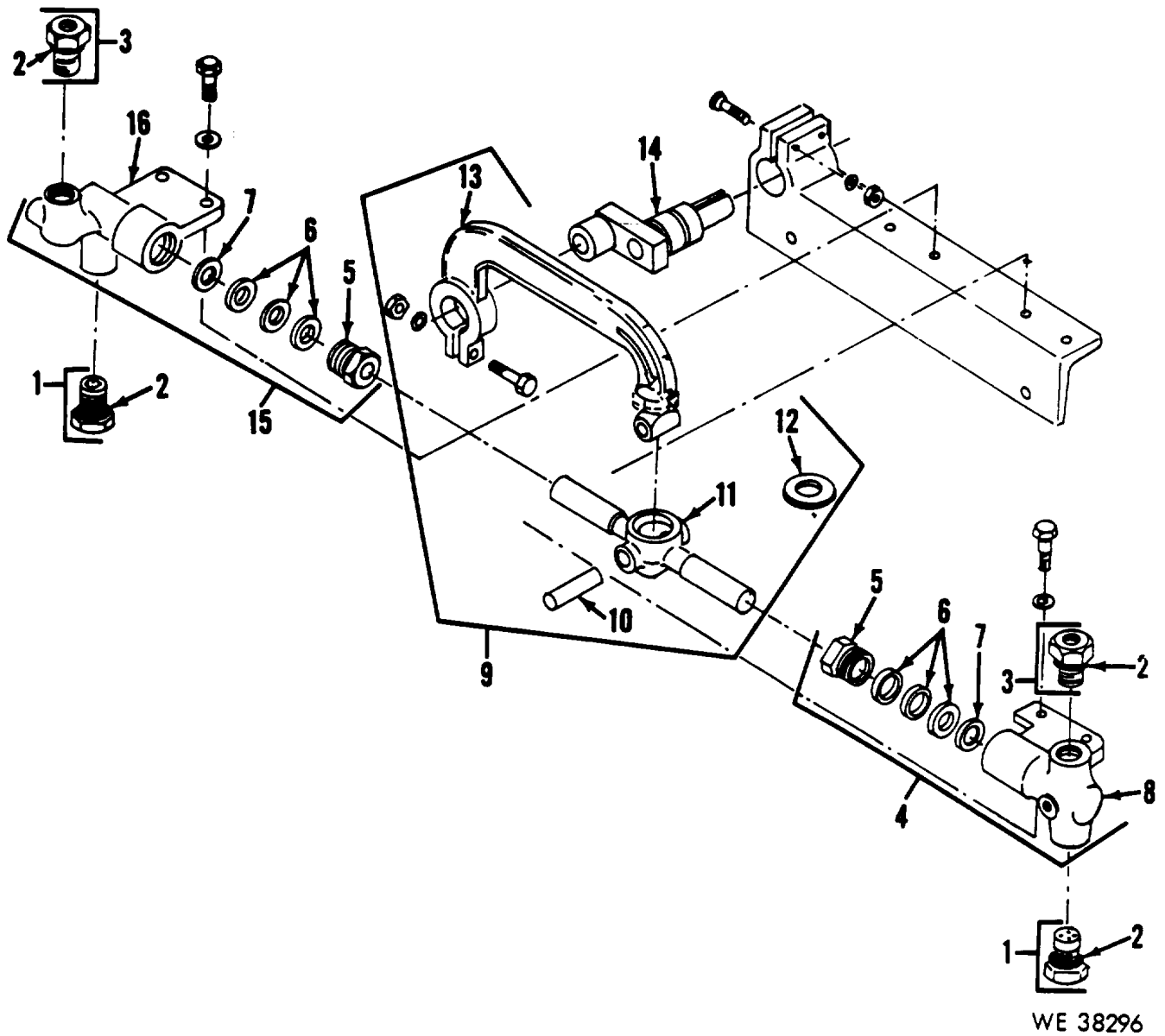


WE 38461

Figure 10. Water tank assembly group - exploded view.

**SECTION II. REPAIR PARTS FOR DIRECT SUPPORT AND GENERAL SUPPORT**  
**Continued**  
**DIRECT SUPPORT, GENERAL SUPPORT and DEPOT MAINTENANCE REPAIR PARTS LIST**

Act on Code	(1) Source Maint and Recov Code			(2) Federal Stock No.	(3) Description  <i>Reference Number &amp; Mfr Code</i> <i>Usable on Code</i>	(4) Unit of Meas	(5) Qty Inc in Unit	(6) 30-Day DS Maint Allowance			(7) 30-Day GS Maint Allowance			(8) 1-Yr Alw Per 100 Equip Cntgcy	(9) Depot Maint Alw Per 100 Equip	(10) Illustration	
	(a) Source	(b) Maint	(c) Recov					(a) 1-20	(b) 21-50	(c) 51-100	(a) 1-20	(b) 21-50	(c) 51-100			(a) Fig. No.	(b) Item No.
P	F		4820-453-9074	TANK, WATER SUPPLY: JP-4710-B (29215)	EA	1	*	1	1	*	1	1	12	*	10	2	
P	F		4940-442-2232	FLOAT, WATER: JD-1416-1 (29215)	EA	1	*	1	1	*	1	1	12	*	10	3	
				ROD, FLOAT: ¼ in. dia, 61/2 in. lg JP-4710-3- (29215)													
P	F		4820-453-9075	VALVE, FLOAT: ½ in. size JP-1583 (29215)	EA	1	*	1	1	*	1	1	12	*	10	4	
P	F		4940-454-8674	INLET, WATER: JP-3610 (29215)	EA	1	*	1	1	*	1	1	12	*	10	5	
P	F		4730-908-3194	CLAMP, HOSE: adj band type MS35842-11 (96906)	EA	2	1	1	2	1	2	1	24	*	10	6	
P	F		4720-199-7806	HOSE, RUBBER: water, ¾ in. id, 16 in. lg ZZ-H-601 (81348)	FT	2	*	1	1	*	1	1	12	*	10	7	
P	F		4940-723-5546	STRAINER ELEMENT SEDIMENT: cyl shape, wire mesh type straining, br, 0.028 in dia wire, 2 layers, 1.062 in. dia c, 0.781 in. h, w/ reinforcement, metal frame JP-2618-7 (29215)	EA	1	*	2	2	*	2	2	24	*	10	8	



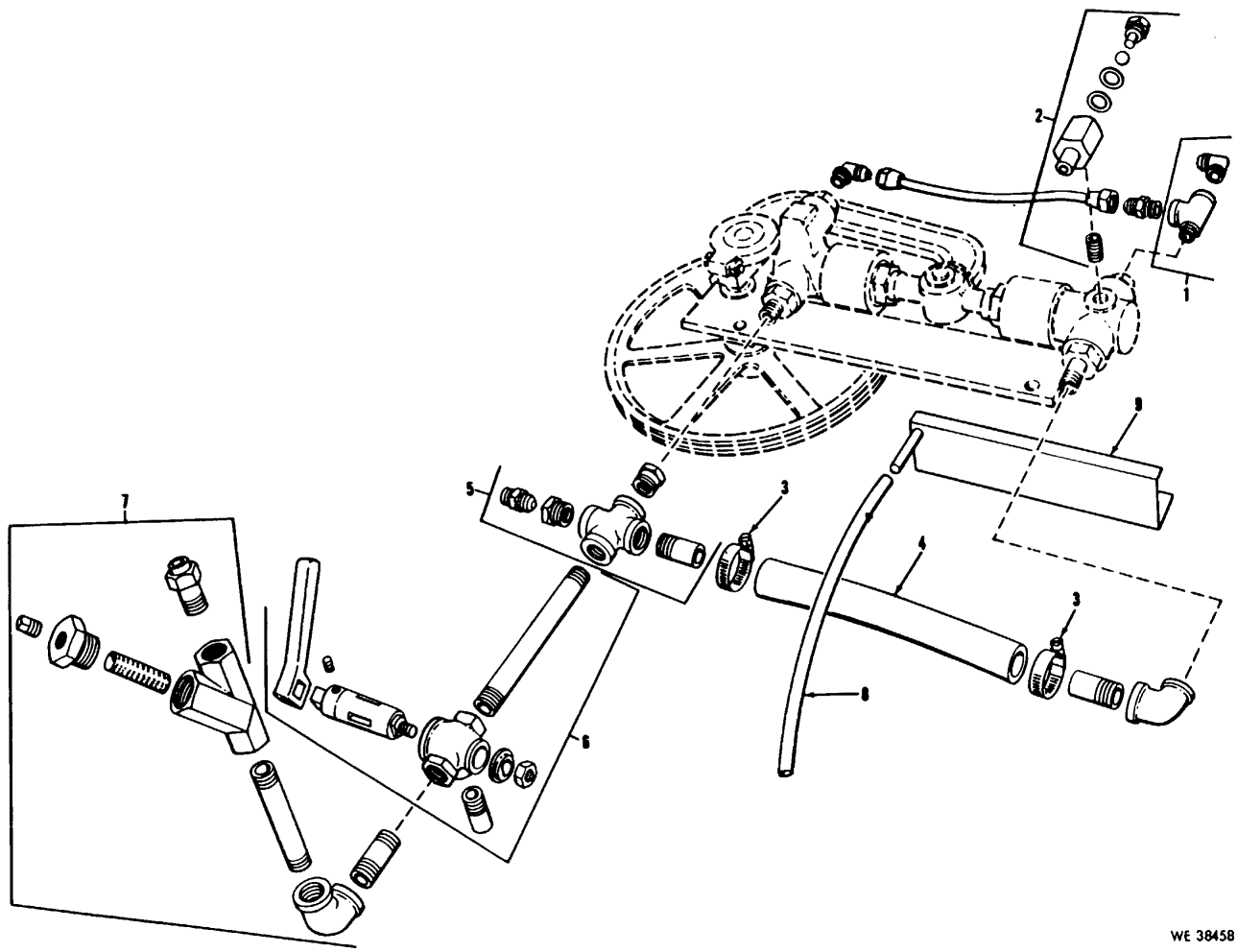
WE 38296

Figure 11. Pump assembly group - exploded view.



**SECTION II. REPAIR PARTS FOR DIRECT SUPPORT AND GENERAL SUPPORT**  
**Continued**  
**DIRECT SUPPORT, GENERAL SUPPORT and DEPOT MAINTENANCE REPAIR PARTS LIST**

Act on Code	(1) Source Maint and Recv Code			(2) Federal Stock No.	(3) Description <i>Reference</i>	(4) Unit of Meas	(5) Qty Inc in Unit	(6) 30-Day DS Maint Allowance			(7) 30-Day GS Maint Allowance			(8) 1-Yr Alw Per 100 Equip Cntgcy	(9) Depot Maint Alw Per 100 Equip	(10) Illustration	
	(a) Source	(b) Maint	(c) Recv					(a) 1-20	(b) 21-50	(c) 51-100	(a) 1-20	(b) 21-50	(c) 51-100			(a)	(b)
																Fig. No.	Item No.
	P	H	R	4940-136-2257	PUMP ASSEMBLY GROUP PUMP ASSEMBLY, STEAM CLEANER: duplex JP-3245 (29215)	EA	1	*	1	1	*	1	1	12	*	11	1
	P	F		4940-728-3732	VALVE, CHECK: inlet JP-3208-A (29215)	EA	2	*	1	1	*	1	1	12	*	11	1
	P	F		5330-168-5512	PACKING, PREFORMED: "O" ring, neprene 7/8 in. id, 3/32 in. thk JD-5118 (29215)	EA	4	2	4	6	2	4	6	72	*	11	2
	P	F		4940-728-3734	VALVE, CHECK: outlet JP-3208-B (29215)	EA	2	*	1	1	*	1	1	12	*	11	3
	P	F		4940-400-2536	RIGHT PUMP ASSEMBLY: JP-3236-B (29215)	EA	1	*	1	1	*	1	1	12	*	11	4
	P	F		4730-245-7724	PACKING NUT: JP-2603-4 (29215)	EA	2	*	1	1	*	1	1	12	*	11	5
	P	F		4940-377-9203	PACKING, PREFORMED: ring JP-2603-3 (29215)	EA	6	2	4	6	2	4	6	72	*	11	6
	P	F		5310-712-0393	WASHER, FLAT:: backup ring JP-2603-7 (29215)	EA	2	2	4	6	2	4	6	72	*	11	7
	X1				RIGHT PUMP BODY: JP-3202-1 (29215)		1									11	8
	P	F		4940-400-7175	PISTON ROD ASSEMBLY: JP-3247 (29215)	EA	1	*	1	1	*	1	1	12	*	11	9
	X1				WRIST PIN: JP-2607-3 (29215)												
	P	F		4940-400-7176	PISTON: pump, 1 1/8 in. x 1 1/8 in. JP-3247-1 (29215)	EA	1	*	1	1	*	1	1	12	*	11	10
	P	F		4940-724-4351	FELT, MECHANICAL, PREFORMED: 1/4 in. thk, 1 1/82 in. od JL-197 (29215)	EA	1	*	1	1	*	1	1	12	*	11	11
	X1				CONNECTING, ROD: JP-3254-1 (29215)		1									11	13
	P	F		4940-400-7177	CRANKSHAFT ASSEMBLY: w/ bearings JP-3879 (29215)	EA	1	*	1	1	*	1	1	12	*	11	14
	P	F		4940-400-7172	LEFT PUMP ASSEMBLY: JP-3245 -B (29215)	EA	1	*	1	1	*	1	1	12	*	11	15
	X2				LEFT PUMP BODY: JP-3207-1 (29215)		1									11	16



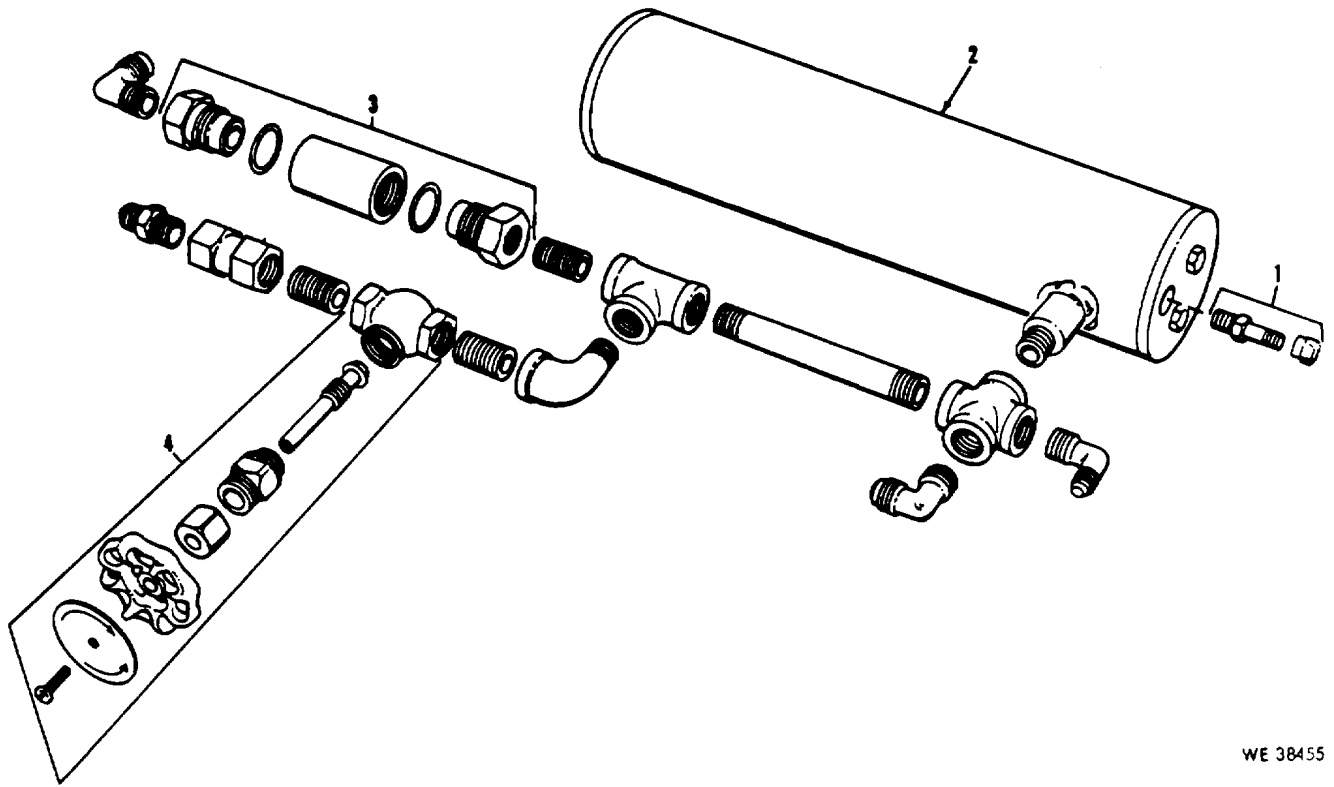
WE 38458

WE 38458

Figure 12. Water pump fittings group - exploded view.

**SECTION II. REPAIR PARTS FOR DIRECT SUPPORT AND GENERAL SUPPORT**  
**Continued**  
**DIRECT SUPPORT, GENERAL SUPPORT and DEPOT MAINTENANCE REPAIR PARTS LIST**

Act on Code	(1) Source Maint and Recov Code			(2) Federal Stock No.	(3) Description  <i>Reference Number &amp; Mfr Code</i> <i>Usable on Code</i>	(4) Unit of Meas	(5) Qty Inc in Unit	(6) 30-Day DS Maint Allowance			(7) 30-Day GS Maint Allowance			(8) 1-Yr Alw Per 100 Equip Cntgcy	(9) Depot Maint Alw Per 100 Equip	(10) Illustration	
	(a) Source	(b) Maint	(c) Recov					(a) 1-20	(b) 21-50	(c) 51-100	(a) 1-20	(b) 21-50	(c) 51-100			(a) Fig. No.	(b) Item No.
	P	F						4940-400-7174	WATER PUMP FITTINGS GROUP	EA	1	*	1			1	*
P	F		4940-435-4686	RIGHT PUMP OUTLET: JP-4722-E (29215) VALVE CHECK, SOLUTION: JP-2669 (29215)	EA	1	*	1	1	*	1	1	12	*	12	2	
P	F		4730-908-3194	CLAMP, HOSE: adj band type MS35842-11 (96906)	EA	2	REF	REF	REF	REF	REF	REF	REF	REF	12	3	
P	F		4720-199-7806	HOSE, RUBBER: water, ¼ in. id, 10 in.	FT	1	REF	REF	REF	REF	REF	REF	REF	REF	12	4	
P	F		4940-400-7178	LEFT PUMP INLET: JP-4722-B (29215)	EA	1	*	1	1	*	1	1	12	*	12	5	
P	F		4940-435-7722	VALVE ASSEMBLY, 3 WAY: w/ fittings JP-4722-F (29215)	EA	1	*	1	1	*	1	1	12	*	12	6	
P	F		4940-400-7166	STRAINER, Y ASSEMBLY JP-4722-C (29215)	EA	1	*	1	1	*	1	1	12	*	12	7	
P	F		4720-340-2967	HOSE, RUBBER: water, 3/8 in. id, 3 ½ ft lg ZZ-H-601 (81348)	FT	4	*	1	1	*	1	1	12	*	12	8	
P	F		4940-400-2517	DRIP PAN ASSEMBLY: JP 4334 (29215)	EA	1	*	1	1	*	1	1	12	*	12	9	



WE 38455

WE 38455

Figure 13. Accumulator with fittings group - exploded view

**SECTION II. REPAIR PARTS FOR DIRECT SUPPORT AND GENERAL SUPPORT**

Continued

**DIRECT SUPPORT, GENERAL SUPPORT and DEPOT MAINTENANCE REPAIR PARTS LIST**

Act on Code	(1) Source Maint and Recov Code			(2) Federal Stock No.	(3) Description  <i>Reference Number &amp; Mfr Code</i> <i>Usable on Code</i>	(4) Unit of Meas	(5) Qty Inc in Unit	(6) 30-Day DS Maint Allowance			(7) 30-Day GS Maint Allowance			(8) 1-Yr Alw Per 100 Equip Cntgcy	(9) Depot Maint Alw Per 100 Equip	(10) Illustration	
	(a) Source	(b) Maint	(c) Recov					(a) 1-20	(b) 21-50	(c) 51-100	(a) 1-20	(b) 21-50	(c) 51-100			(a) Fig. No.	(b) Item No.
	P	F						4820-834-3139	ACCUMULATOR WITH FITTINGS GROUP VALVE, PNEUMATIC TANK: br, 1/8-npt outlet, 302-32 inlet, w/cap 3017 (84147)	EA	1	*	1			1	*
P	F	R	4940-484-0887	ACCUMULATOR: steam cleaner JP-4345 (29215)	EA	1	*	1	1	*	1	1	12	*	13	2	
P	F		4940-442-6052	VALVE CONTROL: measure flo, 1/2 inch JD-2506 (29215)	EA	1	*	1	1	*	1	1	12	*	13	3	
P	F		4940-442-6054	VALVE, BY PASS: globe, 3/8 inch JD-2505 (29215)	EA	1	*	1	1	*	1	1	12	*	13	4	

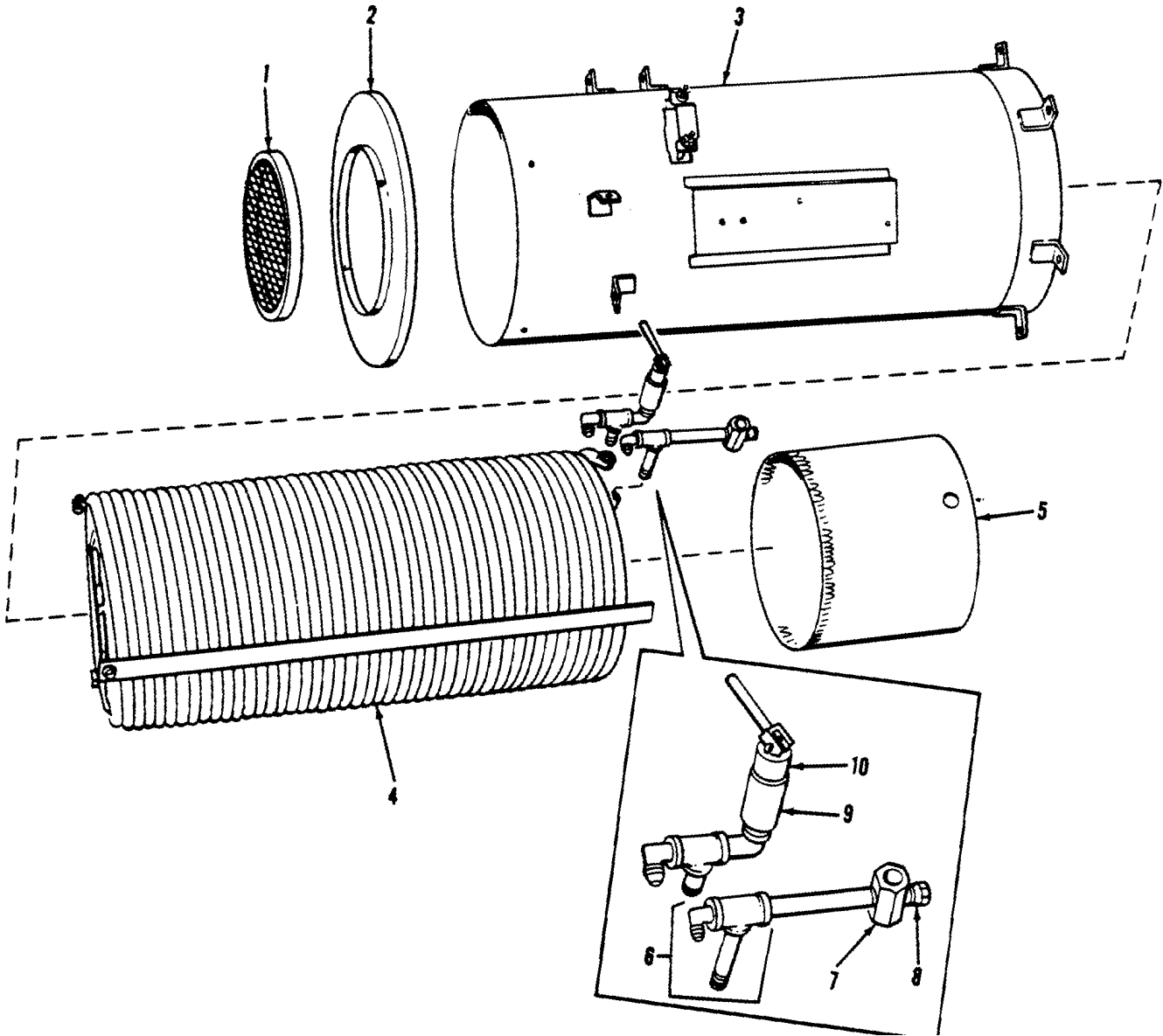
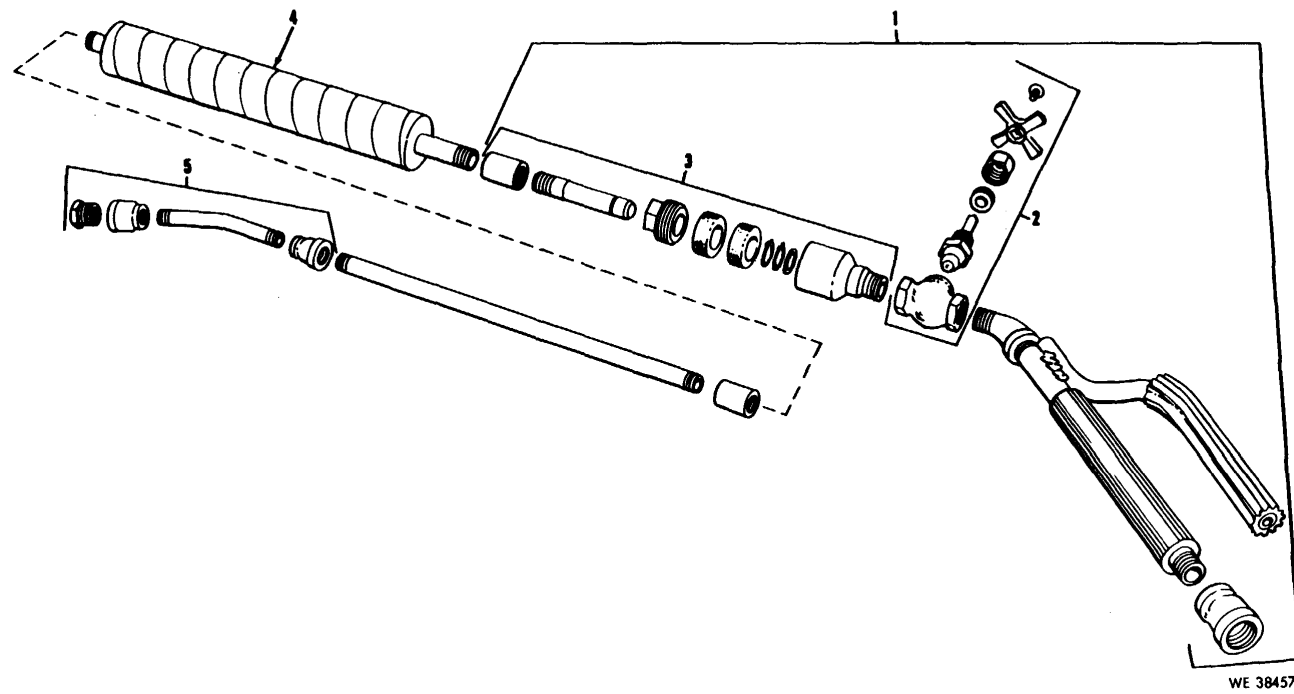


Figure 14. Heating coil and casing assembly group - exploded view

WE 38452

**SECTION II. REPAIR PARTS FOR DIRECT SUPPORT AND GENERAL SUPPORT**  
**Continued**  
**DIRECT SUPPORT. GENERAL SUPPORT and DEPOT MAINTENANCE REPAIR PARTS LIST**

Act on Code	(1) Source Maint and Recov Code			(2) Federal Stock No.	(3) Description  <i>Reference Number &amp; Mfr Code Usable on Code</i>	(4) Unit of Meas	(5) Qty Inc in Unit	(6) 30-Day DS Maint Allowance			(7) 30-Day GS Maint Allowance			(8) 1-Yr Alw Per 100 Equip Cntgcy	(9) Depot Maint Alw Per 100 Equip	(10) Illustration	
	(a) Source	(b) Maint	(c) Recov					(a) 1-20	(b) 21-50	(c) 51-100	(a) 1-20	(b) 21-50	(c) 51-100			(a) Fig. No.	(b) Item No.
	P	H		4940-442-2241	HEATING COIL AND CASING ASSEMBLY GROUP	EA	1	*	1	1	*	1	1	12	*	14	1
	P	H		4940-435-4676	SCREEN, COIL CASING: JP-2279 (29215) COIL CASING, TOP RING: JP-2002-1 (29215)	EA	1	*	1	1	*	1	1	12	*	14	2
	P	H	R	4940-442-2242	CASING, COIL: JP-4706-D(29215)	EA	1	*	1	1	*	1	1	12	*	14	3
	P	H		4940-435-4672	HEATING COIL ASSEMBLY: JP-4723 (29215)	EA	1	*	1	1	*	1	1	12	*	14	4
	P	H		4940-442-2246	FIREPOT, THROAT ASSEMBLY: JP-4717 (29216)	EA	1	*	1	1	*	1	1	12	*	14	5
	P	F		4940-435-4675	VAPOR OUTLET ASSEMBLY: JP-2157-A (29215)	EA	1	*	1	1	*	1	1	12	*	14	6
	P	F		4940-435-4680	TEE, ORIFICE: JP-1138-B (29215)	EA	1	*	1	1	*	1	1	12	*	14	7
	P	H		4940-300-7575	PLUG, HOSE PROTECTOR: (package of six) JP-858 (29215)	EA	1	*	1	1	*	1	1	12	*	14	8
	P	F		4940-435-7721	VALVE, DRAIN AND RELIEF: JP-3669-B (29215)	EA	1	*	1	1	*	1	1	12	*	14	9
	P	F		4940-442-2230	CAP, VALVE, DRAIN RELIEF: JP-3669-2 (29215)	EA	1	*	1	1	*	1	1	12	*	14	10



WE 38457

Figure 15. Cleaning Gun Group - exploded view

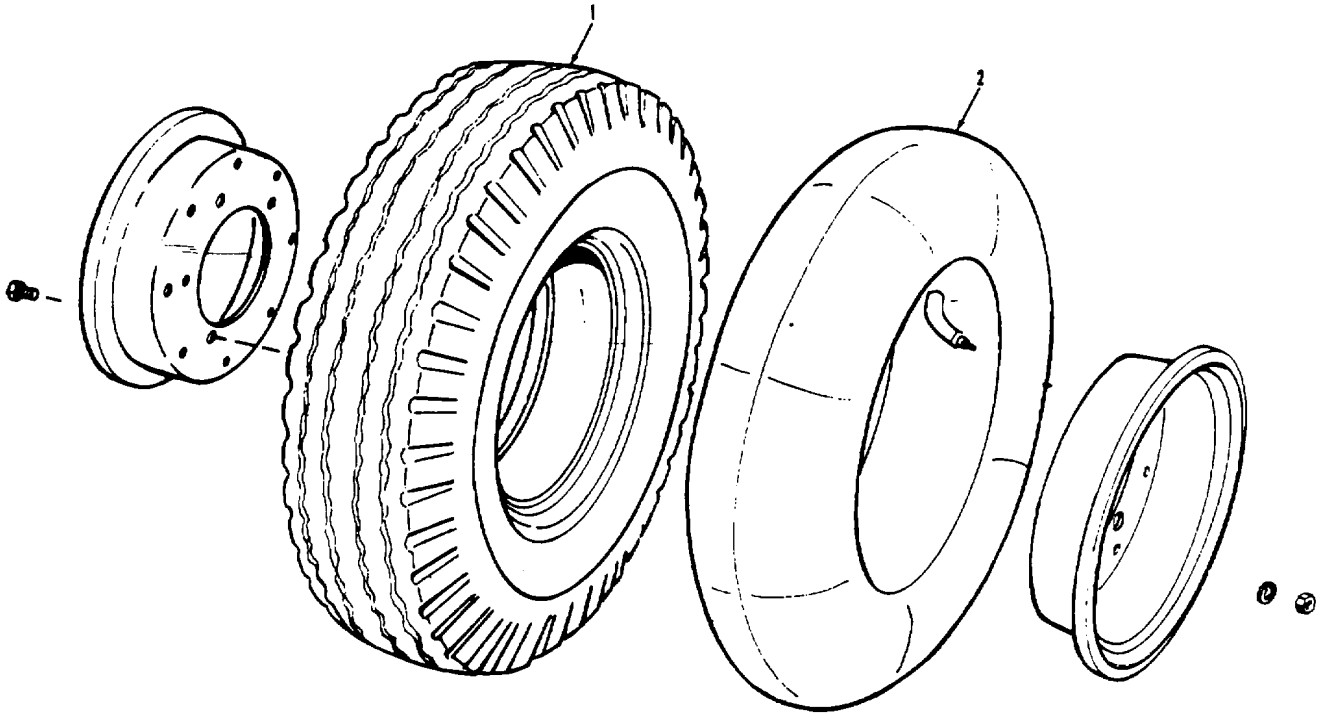


**SECTION II. REPAIR PARTS FOR DIRECT SUPPORT AND GENERAL SUPPORT**

**Continued**

**DIRECT SUPPORT, GENERAL SUPPORT and DEPOT MAINTENANCE REPAIR PARTS LIST**

Act on Code	(1) Source Maint and Recov Code			(2) Federal Stock No.	(3) Description  <i>Reference Number</i>  <i>&amp; Mfr Code Usable on Code</i>	(4) Unit of Meas	(5) Qty Inc in Unit	(6) 30-Day DS Maint Allowance			(7) 30-Day GS Maint Allowance			(8) 1-Yr Alw Per 100 Equip Cntgty	(9) Depot Maint Alw Per 100 Equip	(10) Illustration	
	(a)	(b)	(c)					(a)	(b)	(c)	(a)	(b)	(c)			(a)	(b)
	<del>Source</del>	<del>Maint</del>	<del>Recov</del>					<del>1-20</del>	<del>21-50</del>	<del>51-100</del>	<del>1-20</del>	<del>21-50</del>	<del>51-100</del>			<del>Fig. No.</del>	<del>Item No.</del>
					CLEANING GUN GROUP												
P	H	R	4940-400-2534	CLEANING GUN, STEAM: JP-4744 (29215)	EA	1	1	2	3	1	2	3	36	*	15	.....	
P	H	R	4940-136-2260	GUN HANDLE AND SWIVEL ASSEMBLY: STEAM CLEANER: JE-289-A (29215)	EA	1	*	1	1	*	1	1	12	*	15	1	
P	F		4820-422-9472	VALVE, GLOBE: nozzle control JD-855 (29215)	EA	1	*	1	1	*	1	1	12	*	15	2	
P	F		4730-737-9528	SWIVEL, JOINT, PIPE: steam gun JD-1488 (29215)	EA	1	*	1	1	*	1	1	12	*	15	3	
P	F		4940-736-3542	HANDLE, GUN: JE-280 (29215)	EA	1	*	1	1	*	1	1	12	*	15	4	
P	F		4730-456-1139	NOZZLE, GUN ASSEMBLY: JP-4729-A (29215)	EA	1	*	1	1	*	1	1	12	*	15	5	



WE 38160

WE 38160

Figure 16. Wheel group - exploded view

**SECTION II. REPAIR PARTS FOR DIRECT SUPPORT AND GENERAL SUPPORT**  
**Continued**  
**DIRECT SUPPORT, GENERAL SUPPORT DEPOT MAINTENANCE REPAIR PARTS LIST**

Act on Code	(1) Source Maint and Recov Code			(2) Federal Stock No.	(3) Description  <i>Reference Number</i>  <i>&amp; Mfr Code Usable on Code</i>	(4) Unit of Meas	(5) Qty Inc in Unit	(6) 30-Day DS Maint Allowance			(7) 30-Day GS Maint Allowance			(8) 1-Yr Alw Per 100 Equip Cntgcy	(9) Depot Maint Alw Per 100 Equip	(10) Illustration	
	(a)	(b)	(c)					(a)	(b)	(c)	(a)	(b)	(c)			(a)	(b)
	Source	Maint	Recov					1-20	21-50	51-100	1-20	21-50	51-100			Fig. No.	Item No.
P	F		2610-050-9840	WHEEL GROUP TIRE, PNEUMATIC: 6.00/ 6.90-9,6 ply rating rayon Industrial Utility, highway tread patt, tu type MS35389-6 (96906)	EA	4	*	1	1	*	1	1	12	*	16	1	
P	F		2610-089-5997	INNER TUBE, PNEUMATIC TIRE: 6.00/6.90-9 Industrial Utility, valve no. TR-135 off center of tu, reg std construction ZZ-1-550 (81348)	EA	4	*	1	1	*	1	1	12	*	16	2	

**Section III. INDEX-FEDERAL STOCK NUMBER AND REFERENCE NUMBER CROSS-REFERENCE TO FIGURE AND ITEM NUMBER**

<i>Stock Number</i>	<i>Figure No</i>	<i>Item No</i>	<i>Stock Number</i>	<i>Figure No</i>	<i>Item No</i>	<i>Stock Number</i>	<i>Figure No</i>	<i>Item No</i>
2610-050-9840	16	1	4940-371-6576	6	2	4940-442-2256	4	3
2610-089-5997	16	2	4940-400-2517	12	9	4940-442-2257	4	9
3895-374-6103	7	21	4940-400-2534	15	.....	4940-442-2258	4	6
4530-625-2612	3	5	4940-400-2536	11	4	4940-442-2266	8	1
4720-199-7806	10	7	4940-400-2540	8	6	4940-442-2268	8	2
4720-199-7806	12	4	4940-400-7166	12	7	4940-442-2270	3	1
4720-340-2967	12	8	4940-400-7172	11	15	4940-442-2271	8	5
4730-018-9566	7	9	4940-400-7174	12	1	4940-442-6052	13	3
4730-245-7724	11	5	4940-400-7175	11	9	4940-442-6054	13	4
4730-253-4426	6	3	4940-400-7176	11		4940-443-5123	4	13
4730-456-1139	15	5	4940-400-7177	11		4940 443-5130	7	2
4730-484-0628	9	3	4940-400-7178	12	5	4940-443-5136	7	.....
4730-723-5549	6	1	4940-435-4672	14	4	4940-454-8673	7	26
4730-737-9528	15	3	4940-435-4673	6	8	4940-454-8674	10	5
4730-908-3194	10	6	4940-435-4675	14	6	4940-484-0887	13	2
4730-908-3194	12	3	4940-435-4676	14	2	4940-625-2613	3	3
4820-422-9472	15	2	4940-435-4677	5	2	4940-723-5546	10	8
4820-430-2193	7	8	4940-435-4680	14	7	4940-724-4351	1	12
4820-453-9074	10	2	4940-435-4681	6	11	4940-728-3732	11	1
4820-453-9075	10	4	4940-435-4682	9	2	4940-728-3734	11	3
4820-487-2389	7	10	4940-435-4686	12	2	4940-736-3542	15	4
4820-834-3139	13	1	4940-435-7720	9	4	4940-977-9203	11	6
4940-127-2969	7	3	4940-435-7721	14	9	5305-068-0802	6	6
4940-127-2971	6	7	4940-435-7722	12	6	5310-209-0786	6	5
4940-136-2252	3	4	4940-435-7723	6	9	5310-712-0393	11	7
4940-136-2253	9	.....	4940-442-2230	14	10	5310-905-4762	6	4
4940-136-2254	4	1	4940-442-2232	10	3	5330-168-5512	11	2
4940-136-2255	3	2	4940-442-2234	4	8	5330-429-3945	7	12
4940-136-2257	11	.....	4940-442-2235	4	12	5340-472-6194	7	23
4940-136-2258	3	9	4940-442-2236	8	4	5920-247-0174	4	11
4940-136-2260	15	1	4940-442-2238	8	3	5930-411-5232	5	5
4940-136-2264	6	.....	4940-442-2240	10	1	5930-443-5133	3	8
4940-136-2265	3	6	4940-442-2241	14	1	5950-255-3370	5	8
4940-186-5092	7	18	4940-442-2242	14	3	5975-134-5714	3	7
4940-186-5633	7	14	4940-442-2246	14	5	6145-061-2075	5	3
4940-186-5636	7	19	4940-442-2247	7	1	6145-248-2616	5	6
4940-186-5651	7	24	4940-442-2249	4	2	6145-443-5132	5	1
4940-186-5960	7	25	4940-442-2251	4	5	6145-726-8333	5	7
4940-186-5962	7	5	4940-442-2252	4	10	6240-682-3411	4	7
4940-191-9191	5	4	4940-442-2255	4	4			
4940-300-7575	14	8						

<i>Reference No</i>	<i>Mfg Code</i>	<i>Figure No</i>	<i>Item No.</i>	<i>Reference No</i>	<i>Mfg Code</i>	<i>Figure No</i>	<i>Item No.</i>	<i>Reference No</i>	<i>Mfg Code</i>	<i>Figure No</i>	<i>Item No</i>
G1251	24617	7	9	JD-2404	29215	4	11	JE-193	29215	9	4
J-C30	81348	5	7	JD-2405-A	29215	4	1	JE-290	29215	15	4
J-580	81348	5	3	JD-2408	29215	4	3	JE-289- A	29215	15	1
JD-265- A	29215	6	9	JD-2409	29215	4	10	JL-145-16	29215	6	7
JD-302F	29215	6	8	JD-2410	29215	4	9	JL-197	29215	11	12
JD-659	29215	6	1	JD-2411	29215	4	6	JP-677	29215	9	1
JD-760	29215	9	3	JD-2413	29215	4	4	JP-771	29215	3	5
JD-855	29215	15	2	JD-2505	29215	13	4	JP-772	29215	3	3
JD-1359-2	29215	6	11	JD-2506	29215	13	3	JP-858	29215	14	8
JD-1416-1	29215	10	2	JD-2514	29215	9	2	JP-138-B	29215	14	7
JD-1488	29215	15	3	JD-2555	29215	7	3	JP-1583	29215	10	4
JD-2111-1	29215	4	13	JD-2557	29215	5	8	JP-2002-1	29215	14	2
JD-2117-1	29215	7	1	JD-2558	29215	4	12	JP-2028-1	29215	6	2
JD-2187	29215	8	5	JD-2559	29215	7	26	JP-2033	29215	3	2
JD-2402	29215	3	9	JD-2746-11	29215	7		JP-2157-A	29215	14	6
JD-2403	29215	5	2	JD-5118	29215	11	2	JP-2186-A	29215	8	4

**Section III. INDEX-FEDERAL STOCK NUMBER AND REFERENCE NUMBER CROSS-REFERENCE TO FIGURE AND ITEM NUMBER**

-Continued

<i>Reference No</i>	<i>Mfg Code</i>	<i>Figure No</i>	<i>Item No.</i>	<i>Reference No</i>	<i>Mfg Code</i>	<i>Figure No</i>	<i>Item No.</i>	<i>Reference No</i>	<i>Mfg Code</i>	<i>Figure No</i>	<i>Item No</i>
JP 2186-B	29215	8	3	JP44, 0t D	29215	14	3	MS35842-11	96906	12	3
JP-2279	29215	14	1	JP-4708	29215	3	1	MS90725-6	96906	6	6
JP-2603-3	29215	11	6	JP-4709	29215	9	.....	NE-51H	65083	4	7
JP-2603-4	29215	11	5	JP-4709-A	29215	9	5	ZZ-1-550	81348	16	2
JP-2603-7	29215	11	7	JP-4710-3	29215	10	3	ZZ-H-601	81348	10	7
JP-2607-3	29215	11	10	JP-4710-B	29215	10	1	ZZ-H-601	81348	12	4
JP-2618-7	29215	10	8	JP-4714	29215	4	8	ZZ-H-601	81348	12	8
JP-2669	29215	12	2	JPA4717	29215	14	5	100291	99166	7	21
JP-3140	29215	3	6	JP-4718	29215	6	10	101861	99166	7	23
JP-3142	29215	3	4	JP-4720-A	29215	5	4	131222	99166	7	10
JP-3187	29215	8	6	JP-4722-B	29215	12	5	160011	99166	7	22
JP-3202-1	29215	11	8	JP-4722-	29215	12	7	160018	99166	7	8
JP-3207-1	29215	11	16	JP-4722-E	29215	12	1	160019	99166	7	20
JP-3208-A	29215	11	1	JP-4722-F	29215	12	6	160023	99166	7	15
JP-3208-B	29215	11	3	JP-4723	29215	14	4	160024	99166	7	12
JP-3236-B	29215	11	4	JP-4725	29215	6		160027	99166	7	14
JP-3245	29215	11		JP-4728-A	29215	7	2	160031	99166	7	16
JP-3245-B	29215	11	15	JP-4729-A	29215	15	5	160032	99166	7	11
JP-3247	29215	11	9	JP-4731-2	29215	3	7	160041	99166	7	13
JP-3247-1	29215	11	11	JP-4732-B	29215	5	1	160t46	99166	7	6
JP-3254-I	29215	11	13	JP-4733	29215	4	2	160061	99166	7	7
JP-3591-1	29215	3	8	JP-4733-1	29215	4	5	160067	99166	7	18
JP-3610	29215	10	5	JP-4743	29215	5	5	160079	99166	7	5
JP-3669-2	29215	14	10	JP-4744	29215	15		160092	99166	7	25
JP-3669-B	29215	14	9	MILP-18174	81349	6	3	160132	99166	7	17
JP-3879	29215	11	14	MS35335-33	96906	6	5	160140	99166	7	19
JP-4319	29215	8	2	MS35389--6	96906	16	1	3017	84147	13	1
JP-4333	29215	8	1	MS35842-11	96906	10	6	395228	99 16ti	7	24
JP-4334	29215	12	9	MS51967-2	96'906	6	4	51361	99166	7	4
JP-4345	29215	13	2								

By Order of the Secretary of the Army:

Official:

VERNE L. BOWERS,  
Major General, United States Army,  
The Adjutant General.

W. C. WESTMORELAND,  
General, United States Army,  
Chief of Staff

DISTRIBUTION:

Active Army

DCSLOG (1)

CNGB (1)

TSG (1)

CofEngm (6)

Dir of Tram (1)

ACSCE (1)

CofSptS (2)

CONARC (3)

USAMC (10)

USAMUCOM (2)

ARADCOM (2)

ARADCOM Rgn (2)

USATACOM (5)

USAAVSCOM (5)

USAWECOM (75)

08 Maj Comd (5)

LOGCOMD (3)

Armies (3) except

Seventh (5)

Eighth (5)

USAOC&S (2)

USAPG (1)

USMA (3)

MAAG Vietnam (2)

MAAG Iran (1)

USACDCEC (10)

Ft Knox FLDMS (10)

Army Dep (3)

USAATC (2)

Arsenal (2) except

Rock Island (6)

M FLDM8 (5)

Engr FLDMS (5)

WSMR (1)

USA COMZEUR (3)

Instl (1)

Units org under fol TOE:

(2 cys each unit)

9-9

9-137

9-197

9-247

9-357

10-349

11-687

17-100

29-11

29-21

29-25

29-26

29-35

29-36

29-37

29-75

29-79

29-127

29-137

37-100

NG: State AG (3)-Units same as Active Army except 2 copies each unit.

USAR: None.

For explanation of abbreviations used, see AR 310-50.

\*U. S. GOVERNMENT PRINTING OFFICE: 1971-74-018/5177

RECOMMENDED CHANGES TO EQUIPMENT TECHNICAL PUBLICATIONS



THEN... JOT DOWN THE DOPE ABOUT IT ON THIS FORM. CAREFULLY TEAR IT OUT, FOLD IT AND DROP IT IN THE MAIL!

**SOMETHING WRONG WITH THIS PUBLICATION?**

FROM: (PRINT YOUR UNIT'S COMPLETE ADDRESS)

DATE SENT

PUBLICATION NUMBER

PUBLICATION DATE

PUBLICATION TITLE

BE EXACT... PIN-POINT WHERE IT IS

IN THIS SPACE TELL WHAT IS WRONG AND WHAT SHOULD BE DONE ABOUT IT:

PAGE NO.

PARA-GRAPH

FIGURE NO.

TABLE NO.

TEAR ALONG PERFORATED LINE

PRINTED NAME, GRADE OR TITLE, AND TELEPHONE NUMBER

SIGN HERE:

DA FORM 2028-2  
1 JUL 79

PREVIOUS EDITIONS  
• ARE OBSOLETE.

P.S.—IF YOUR OUTFIT WANTS TO KNOW ABOUT YOUR RECOMMENDATION MAKE A CARBON COPY OF THIS AND GIVE IT TO YOUR HEADQUARTERS.

**TM 9-4940-324-34P - DIRECT SUPPORT AND GENERAL SUPPORT  
MAINTENANCE REPAIR PARTS AND  
SPECIAL TOOLS LIST FOR CLEANER,  
STEAM, PRESSURE JET, WHEEL  
MOUNTED -1971**